



**INTERNATIONAL
POSTGRADUATE
STUDY GUIDE**

2022

Est.
1841

**YORK
ST JOHN
UNIVERSITY**



Welcome



For almost 200 years York St John University has been transforming lives through education.

Originally a renowned teacher training college, we are now a well established university with increasingly influential research and impact across a diverse portfolio of courses. We have an excellent reputation in our city and region as a partner, influencer and change-maker.

We are a different kind of university. Our mission is defined by opportunity, equality and fairness and our vision is to bring out the brilliance in everyone. We value curiosity, generosity and intellectual rigour. We put people first. We offer inspiring learning, impactful research and strong support for your career – support that lasts a lifetime.

With us you are a name, not a number. That means you will be taught in small groups and have access to the right expertise and resources to help you at every stage of your studies. Our enthusiastic academics are building a global reputation for the work they do and the difference they make – be part of it!

We are a partner of choice for an ever-expanding range of industry leading businesses and organisations. This helps us to ensure our postgraduate degrees are career focused, practical and purposeful. There has never been a more exciting time to choose postgraduate study at York St John University.

Talk to us



MEET THE TEAM

Our International Team regularly travel around the world to meet applicants and agents. Find out when they will be near you by visiting:

yorks.ac.uk/yourcountry

LET AGENTS SUPPORT YOU

Our recruitment agent partners across the world can also help you make your decision about your postgraduate studies. Find an agent local to you at:

yorks.ac.uk/international/your-country/

VISIT US

If you happen to be visiting the UK, why not visit our campus?

We run a number of postgraduate open evenings where you can speak with our staff and students first-hand. For dates visit:

yorks.ac.uk/postgraduate

We also run two campus tours each week which are a great opportunity to see our beautiful campus and get a feel for the university. Please let us know you can visit and we will accommodate for you to join a tour. Visit: yorks.ac.uk/campustours

Our International Team will always be happy to meet you, if you happen to be in York, so please get in touch and let us know. Email: intdev@yorks.ac.uk



“ YSJ always felt like home. Initially, it took a few weeks to get used to British culture, especially the Yorkshire accent! The staff and lecturers in the Business School were so helpful and very supportive. They were welcoming and gave their fullest support to me. It felt like home. ”

THEJAKITH, SRI LANKA

Business Management BA (Hons) and MBA

Why choose postgraduate study?

WELCOMING YOU

The UK has a long tradition of welcoming international students and by joining us at York St John you can be assured of a community that understands your academic and personal aspirations and has a dedicated International Student Support team to provide assistance and support in all areas.

STAND OUT FROM THE CROWD

UK research is world leading and well recognised as internationally excellent. It is a country where all postgraduate students have an outstanding record of employment. At York St John 97% of our students are in employment within six months of graduating. Furthermore, it is suggested that if you have a postgraduate degree and go on to work in the UK you could earn an average of £6,000 a year more than those with only an undergraduate degree*. A postgraduate degree with YSJ is the first step to standing out from the crowd.

NETWORKING

According to the UK government's Department for Business Innovation and Skills, the UK ranks second in the world for collaboration between universities and businesses. We take pride in helping our students progress and excel in all areas of their lives and from your lecturers, to visiting speakers and fellow students, we provide a fantastic opportunity for you to build connections alongside your postgraduate study.

TEACHING

Our innovative and excellent teaching methods have seen us be recognised as 10th in the UK for teaching quality (Sunday Times Good University Guide 2019). We provide an exceptional opportunity for international students to expand their study skills and experience new ways of learning, favouring a mix of hands-on, practical learning alongside traditional classroom teaching.

LEARN NEW SKILLS

As well as constantly improving your English language, postgraduate study will aid you in building up a number of other key life skills. From public speaking, by presenting your work at our Postgraduate Research Conference, to teaching undergraduate students as part of your PhD programme, or project management skills by organising events, the opportunities at York St John will take your learning to the next level and provide an excellent platform for progression both in the UK or your home country.

BE AT THE CUTTING EDGE

With postgraduate study you can delve deeper into what you feel passionate about and find your own niche. You will have the opportunity to contribute to our influential research programmes and be part of something bigger. Universities are places of discovery, debate and new ideas. We are the people looking to the future and innovating for a changing world. By joining our postgraduate community, you too can be part of this.

* Department For Education Graduate Labour Market Report 2017

Why choose York St John University?



STUDENT EXPERIENCE

Our postgraduate community is growing and thriving. The 2018 national Postgraduate Research Experience Survey (PRES) ranked York St John University first in 3 categories, including overall student satisfaction.

RESEARCH THAT MATTERS

Our research tackles real problems and has a positive impact on people's lives. Find out more at: yorksj.ac.uk/research

BEST PLACE TO LIVE IN BRITAIN

In 2018 *The Sunday Times* named York the best place to live in Britain, and in 2019 named it the best place to live in the North. Our campus is at the heart of this friendly, historic city.

FLEXIBLE LEARNING

We believe that education is for everybody. That's why we work hard to make our postgraduate courses accessible to you, whatever your circumstances.

PART OF THE COMMUNITY

From delivering theatre workshops in prisons to working with local sports teams, we give back to the city and the region we are proud to call home.

WITH US IT'S PERSONAL

We recognise that every learning journey is different. We get to know you as an individual and support you in achieving your personal goals.

Postgraduate student life

STUDENTS' UNION

Students from all over the world and all walks of life study on our postgraduate courses, and starting a new course is a chance to meet a new group of people. All of the Students' Union (SU) societies and sports clubs are open to postgraduate students, so you can stay part of your team (if you've studied with us before) or try something new.

The team at the SU now includes a full time Postgraduate and Mature Student Officer who is dedicated to representing our postgraduate community. They focus on issues which may affect you, liaising with the presidents and appropriate staff to ensure the postgraduate student voice is always heard and considered.

FLEXIBLE STUDY

We know that postgraduate students often have jobs, young families or other commitments to juggle alongside their studies. Flexible part time options are available for the majority of our courses (an MA or MSc course will usually take two years to complete if you choose this route).

Even as a full time student, a lot of our postgraduate teaching takes place on evenings, and you may only be on campus a few times a week. This leaves you free to fit in the independent study needed for your course whenever works best for you. Some of our postgraduate courses run exclusively on weekends and evenings, making them ideal to study alongside full time work.



Supporting you

You can come to our expert teams any time you need advice, guidance, or just to find someone to talk to.

Student Advisors attend regular training to keep up-to-date with issues relating to university life. If they can't answer your query they will know someone who can – referring you on to one of our specialist teams, another department in the university or an external agency.

ACADEMIC SUPPORT

Moving from undergraduate to postgraduate study means taking a step up in your academic work. If you think you may need to refine your writing, presenting or reporting skills then our Study Development Team are here to help. They deliver workshops and short courses as well as one-to-one support to help you adapt to postgraduate level study. Our Insessional Support and Language Development team also offers support with English language, communication and academic skills to international students, through individual tutorials, workshops, practical advice and a weekly Academic Discussion Group. We also have a Student Success and Engagement Team who support groups with specific needs, such as student carers, mature students and international students. Pre-arrival support, peer support groups and skills development opportunities are all accessible through this team.

yorksj.ac.uk/students/study-skills/

HEALTH AND WELLBEING

Being healthy, happy and accepted is key to being successful at university. The Wellbeing Team are psychological professionals who provide free, confidential counselling, welfare advice and mental health support to all students. They host daily drop-ins and provide the Wellbeing Zone, our online resource which you can sign up to and use to access self-help materials and additional support. We also offer spiritual support to students from all beliefs and of no faith through our Chaplaincy.

Our on-campus Health Centre provides primary health services including GP surgeries and nurse led clinics to support a healthier, happier you.

yorksj.ac.uk/health-and-wellbeing/student-health-centre/



DEDICATED INTERNATIONAL SUPPORT

Our dedicated international support team assists you right from the start, with help in language, study skills, finance, mental wellness and general settling in. At peak arrival times in York, we will even pick you up at the airport. Our York Campus is home to our Global Café, where you can meet fellow students at our weekly sessions and discover York, Yorkshire and beyond with our busy schedule of Global campus trips.

yorksj.ac.uk/international/international-student-support/

DISABILITY ADVICE

We offer a range of services to students with disabilities or long-term health conditions. Every student's requirements will be different, so if you need advice please get in touch as soon as possible. We also offer screening for specific learning difficulties and can help arrange an educational psychologist's assessment. If you are diagnosed with a specific learning difficulty there is a wide range of support available including specialist tutors, mentoring and assistive technology software.

yorksj.ac.uk/health-and-wellbeing/disability-support/





York

With the oldest shopping street in Europe, all the coffee shops you could ever want, a pub for every day of the year, independent cinemas and festivals every month, we know you will love living in York as much as we do.

York is perfectly placed within North Yorkshire, close to national parks, areas of outstanding natural beauty and dramatic coastline. It is also easy to get to bustling and exciting cities including Leeds, Manchester and Newcastle, and you can be in London in just under two hours by train.

Download a copy of our York Guide to find out more about the city at: yorks.ac.uk/study/undergraduate/student-life/life-in-york/



LIVING IN YORK

Our university accommodation includes studio apartments and shared flats or houses, all of which are within 20 minutes' walk of campus. Whilst most of this accommodation is rented by undergraduate students, you can also apply for a place when you join us as a postgraduate student. yorks.ac.uk/accommodation

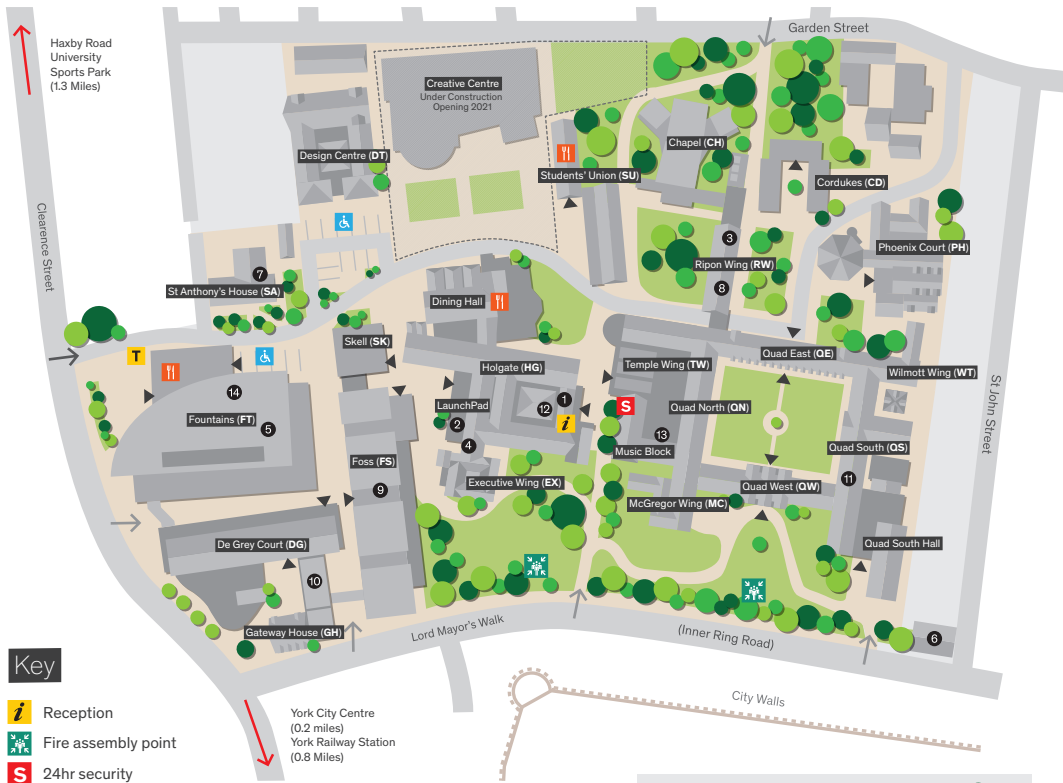
The majority of our postgraduate students choose to live in privately rented accommodation in the city. With so many students living in York, there are plenty of options available. YorProperty is the local council's voluntary landlord accreditation scheme. The university supports this scheme, which helps to make sure that all of our students have access to a high standard of accommodation and are treated fairly by their landlords. yorproperty.co.uk



Est.
1841

**YORK
ST JOHN
UNIVERSITY**

Campus Map



Key

- Reception
- Fire assembly point
- 24hr security
- Taxi pick-up and drop off point
- Blue badge parking
- Catering outlet
- Vehicle entrance
- Pedestrian entrance
- Entrance to buildings
- We operate a smoke free campus
- Toilets are located in all main buildings

Room Key

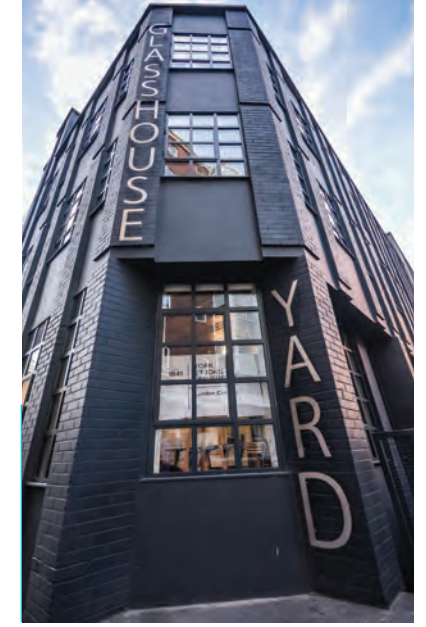
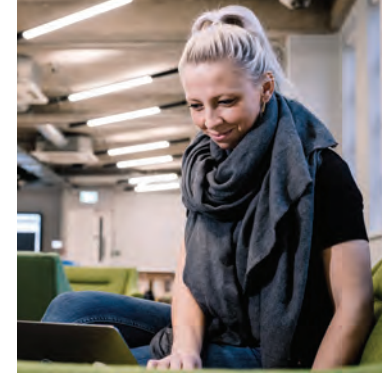
DG103 - DG 1 03
 DG - Building
 1 - Floor
 03 - Room No.

Main Reception: 01904 624 624
 24hr Security:
 Emergencies 01904 876 444
 Non-emergencies 01904 876 777

- 1 Accommodation Office
- 2 Careers, Placements and Student opportunities
- 3 Finance
- 4 Graduate Centre
- 5 Fountains Learning Centre
- 6 44 Lord Mayor's Walk
- 7 Porters' Lodge
- 8 Registry
- 9 Sports Hall/Sports Performance
- 10 School Admin Team (De Grey)
- 11 School Admin Team (Quad South)
- 12 Student Services
- 13 Temple Units
- 14 Yorkshire Film Archive



Should you hear the fire alarm, please make your way to a fire assembly point on the front lawns.



London

The Glasshouse, our London Campus, is at the heart of the capital's business enterprise and creative centre.

With excellent transport links and within moments of the world-famous Barbican Centre, our new campus is based at the very heart of London's creative, technology and business creation ecosystems. The campus is home to a suite of contemporary courses designed to nurture the creative and business pioneers of the future.

A base in London means we can work with even more of the biggest brands in the world, accessing opportunities and experts that inspire. Our campus is based within a few minutes of major offices for Google, Amazon, London Calling Alexander McQueen, Virgin Active and over 100 other leading companies.

We have created a dynamic, contemporary and exciting home for learning in London that will take you to the very heart of current business thinking. Developed collaboratively with the support of industry experts, our portfolio of courses are fresh, distinctive, cutting edge and career relevant. yorks.ac.uk/london-campus





Postgraduate courses available at our London campus:

- MBA with Professional Experience
- Masters of Business Administration (MBA)
- Healthcare Management MBA
- Computer Science MSc
- Data Science Degree Apprenticeship

All courses are available with a year in industry.

London course fees:

- PG Taught – MSc (1 year) **£12,300**
- PG Taught - MSc with Professional Practice (2 years) **£14,600**
- PG Taught - Masters in Business Administration (1 year) **£10,800**
- PG Taught - MBA Year with Professional Practice (2 years) **£14,400**
- PG Taught - MBA Venture Creation Labs (2 years) **£14,400**

We know finding the right accommodation is really important and there is a huge variety of options available in London. To explore housing available with trusted providers of student accommodation in London, visit: yorksj.ac.uk/london-campus/study-in-london



HELPING YOU DECIDE YOUR CAREER

Gaining professional experience can help you confirm your career aspirations or discover new ones. The right professional experience will help you evaluate your career path.

INDUSTRY PLACEMENTS

An industry placement is a great option to gain practical experience, increasing your commercial awareness, industry contacts and career portfolio. You will have the opportunity to take on responsibility within a company related to your studies, either in York, home to high profile national and international businesses or elsewhere within the UK.

Our centrally based London campus is right in the heart of the city, giving you access to some of the most influential companies shaping the world around us; from Silicon Roundabout, a cluster of high-tech companies and ambitious entrepreneurs, to The Square Mile, the historic financial district and home to the London Stock Exchange and Bank of England. If you are looking to explore your creative side, East London is dominated by leading creative agencies, while the campus itself is located in the heart of the design district.





VENTURE CREATION LAB (VCL)

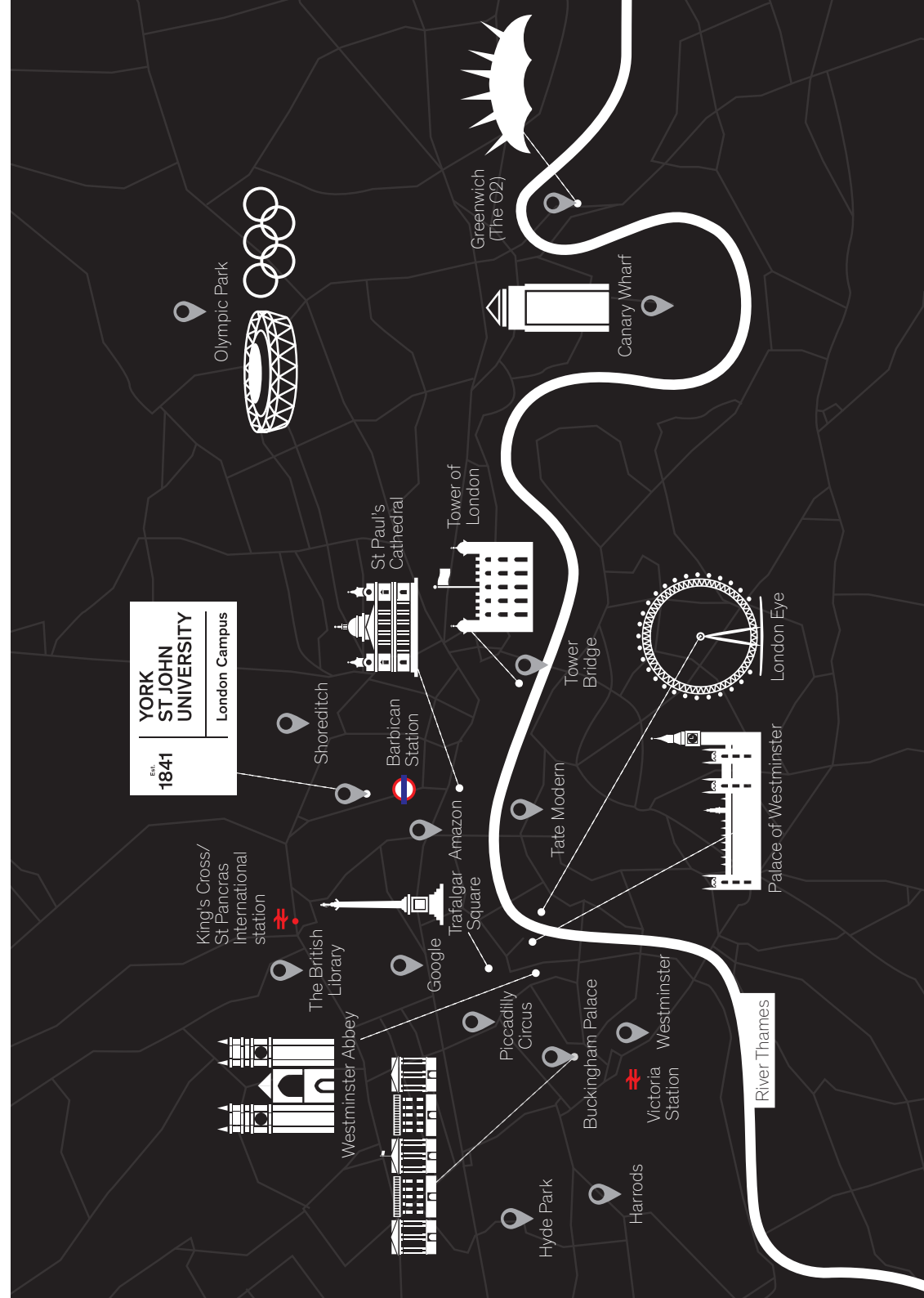
The VCL programme is an expert-led experience which allows you to design and develop an enterprising business opportunity. You can opt to enrol in the VCL programme instead of a placement and compete for funding to develop and launch a company. As an international student this could potentially lead to securing a Graduate Entrepreneur Visa.

The aim is to identify current issues businesses are facing and create new innovative solutions but it also serves as a leadership development programme, further advancing your skills and knowledge of effective communication, influencing, negotiation, change management, accountability and coaching. So even if you don't have the goal of launching your own company, the VCL programme will still advance your career and help you evidence your abilities to future employers.



THE STUDENT CONSULTANCY PROGRAMME

The Student Consultancy Programme allows you to work directly with local business, charities and community organisations to assist with real-world business issues or problems. You will research issues, devise solutions and be assessed on your work, which may well be taken forward and used by the company.





Taught postgraduate courses

We offer taught postgraduate courses across a wide range of subjects, so you can either establish a niche in your current discipline or explore something new.

Taught courses will follow a similar format to your undergraduate degree, but with the opportunity to find your own specialism within your subject and explore this through an extended dissertation or project. Part time options are available for most courses, so you may be able to work alongside continuing your study.

For an up-to-date list of the taught postgraduate courses available go to: yorks.ac.uk/postgraduate



The welcoming and multicultural environment at York St John University provides the ideal base for studying in the UK. Every single part of this course has been a complete joy, especially the interactive style.

NAHED AHMED, PALESTINE
PhD, York Business School

Research degrees



A research degree is your chance to find your specialism and establish yourself as an expert in your field.

If you have an idea for a new project, have the passion and dedication to explore it in depth, and want to make a positive impact on the world through your research, we want to work with you.

Our small but ambitious research community spans a huge range of specialisms. By joining this growing community you will be introduced to all kinds of new opportunities.

Find out more at: yorks.ac.uk/research

Choosing where to conduct my PhD was a very big decision. I knew from studying my BA and MA here that York St John was a university that offered a unique student experience. That is why I applied for my PhD Proposal on Contemporary African America literature.

The English Literature team questioned my theoretical positions, forced me to confront ideas that I had neglected and encouraged me to engage with concepts outside of my comfort zone. Looking back, their help in the earlier stages had a very positive effect on the direction and focus of my research.

There are research conferences and symposiums throughout the year. These events create a real buzz on campus and are a great platform for postgraduate researchers to discuss their research. During my time at York St John I have been able to attend and present at multiple research conferences, and my PhD Supervision Team are a constant source of encouragement, pushing me to try out my ideas as my degree progresses.

TOM JACKSON
PhD English Literature Candidate



Graduate in York Minster

Graduating from your postgraduate course is a defining moment. This unforgettable day is dedicated to you and your achievements.

York Minster is one of the biggest tourist attractions in the north of England but for your graduation it is dedicated to you and your success. Celebrate your achievement in the iconic York Minster, soak up the atmosphere and share the moment with friends, family and the staff who have inspired you along the way. This is your time.

Watch graduation unfold on our website:
yorks.ac.uk/graduation



The path to postgraduate study

Taught degrees

1. FIND YOUR COURSE

Postgraduate courses are usually more specialised than undergraduate degrees, so it's worth looking around to find the one which best fits your interests.

Research degrees

1. FIND YOUR SPECIALISM

You will need to find a topic which fascinates you enough to study it long-term, and which can be supervised by a member of our academic staff with expertise in the same area. You can find a list of research interests we can support and look for the right supervisor on our website.

www.yorks.ac.uk/researchsupervision

2. APPLY ONLINE

We accept applications directly through our own website. You will find an application link on each of our course pages. Depending on your course you may be invited to interview, or we may make a decision based on your application alone.

3. ACCEPT YOUR PLACE

You will receive your decision from the Admissions Team by email. Acceptance emails include a reply slip which you can send back to us either by email or by post to confirm your place.

For more information about the admissions process contact:

E: admissions@yorks.ac.uk T: 01904 876598

Applying for postgraduate study



RESEARCH DEGREES

To apply for a research degree you must hold the equivalent of at least a 2:1 in your undergraduate degree. You will also need to find a new topic (or new approach to a topic) which you are passionate about and a member of our academic staff who shares this interest and can support you. You can find your research supervisor on our website. yorks.ac.uk/researchsupervision

VISAS

If you are a non-UK applicant you will need to check visa entry requirements for studying in the UK. These can be found on the Home Office website: www.gov.uk. Our Visa and Compliance Team are happy to answer any questions you have and to provide information and advice relating to your application.

FOR MORE INFORMATION:

E: visa@yorks.ac.uk

OUR TABLE ON PAGES 20 TO 21 WILL ALSO PROVIDE YOU WITH FURTHER INFORMATION.

English Language Requirements

Studying for a postgraduate course requires a certain level of English language. We can accept a range of qualifications as proof of English Language, including:

IELTS	6.0 (with no less than 5.5 in each component)
Cambridge English: Advanced (CAE)	Overall score of 169, with no score below 162
Cambridge English: Proficiency (CPE)	Overall score of 180, with no score below 180
Pearson (PTE)	Overall score of 51, with no less than 49 in any component
Trinity	ISE III (C1 SELT) with a Pass in each component
TOEFL iBT	Overall score of 75 (Listening 17, Reading 18, Speaking 20, Writing 20), other forms of TOEFL are not acceptable
GCSE	Grade C or above in English Language
iGCSE	Grade C or above in English as first Language
AS or A Level	Pass in English Language
Bachelors or Masters Degree	Successful completion at a University in a majority English-speaking country where the language of tuition has been English
European Baccalaureate	L1 – 6.0, L2 – 7.0, L3 – 7.5
International Baccalaureate Organisation (IBO)	English A: Literature (Standard: Level 4, Higher: Level 4), English A: Literature and Language (Standard: Level 5, Higher: Level 4), English Language B (Standard: Level 6, Higher: Level 5)

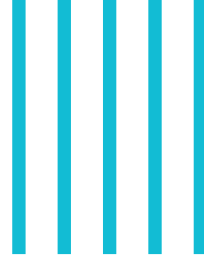
Masters courses in Language & Linguistics and all research programmes along with BHSc and MSc Physiotherapy, NHSc and MSc Occupational have different requirements. You can find out further details at, along with other courses that may vary, at: yorks.ac.uk/international/how-to-apply/your-country/ or contact admissions@yorks.ac.uk

International Qualifications

With students from over 100 countries, we accept many different qualifications. If your country isn't listed, just get in touch with our friendly admissions team for help at: admissions@yorks.ac.uk
www.yorks.ac.uk/international/how-to-apply/your-country/

Country	Qualification Title
Australia	A minimum grade of Lower Second Class Honours in a Bachelor Degree.
Bangladesh	Applicants with a Bangladesh Undergraduate Degree would be required to additionally complete a UK Honours Degree at 2:2 or equivalent prior to studying at Postgraduate Level.
Belgium	A minimum grade of Op voldoende wijze (low)/Geslaagd (low) (Flanders), 65% (German-speaking Community) or Satisfaction (Wallonia) from a University Bachelor Degree for Postgraduate courses requiring a 2:2 UK Degree equivalent.
Bulgaria	A minimum grade of 4.60 from a University Bachelor Degree (post-2002) for Postgraduate courses requiring a 2:2 UK Degree equivalent.
Canada	A minimum grade of C+ or 62% from a University 4 year Bachelor Degree or a GPA of 2.40 (out of 4.00) for courses requiring a 2:2 UK Degree equivalent.
China	A minimum grade of 77% in a Bachelor Degree.
Cyprus	A minimum grade of 5.90 or B (Second Class Honours) from a University Bachelor Degree for Postgraduate courses requiring a 2:2 UK Degree equivalent.
Egypt	A minimum grade of 2.40 from a University Bachelor Degree for Postgraduate courses requiring a 2:2 UK Degree equivalent.
France	A minimum grade of 10.20 from the Grade de Licence for Postgraduate courses requiring a 2:2 UK Degree equivalent.
Germany	A minimum grade of Befriedigend from a University Bachelor Degree for Postgraduate courses requiring a 2:2 UK Degree equivalent.
Ghana	A minimum grade of Lower Second (low) from a University Bachelor Degree for Postgraduate courses requiring a 2:2 UK Degree equivalent.
Greece	A minimum grade of 5.3 from a PITYXIO Diploma/Degree (University Sector) or a minimum grade of 6.50 from a PITYXIO Diploma/Degree (TEI) for Postgraduate courses requiring a 2:2 UK Degree equivalent.
Hong Kong	A minimum grade of Second Class (Division 2) Honours from a University Bachelor Degree (Honours) for Postgraduate courses requiring a 2:2 UK Degree equivalent.
India	A minimum grade of Third (high) from a University Bachelor of Arts, Commerce or Science Degree or a minimum grade of 6.0 from a Professional Bachelor Degree of Technology or a minimum grade of 55% from a Three Year Professional Bachelor Degree for Postgraduate courses requiring a 2:2 UK Degree equivalent.
Italy	A minimum grade of 86 from the Laurea for Postgraduate courses requiring a 2:2 UK Degree equivalent.
Japan	A minimum grade of 2.30 (where the pass grade is 2.00) or a minimum grade of 1.60 (where the pass grade is 1.00) from a University Bachelor Degree for Postgraduate courses requiring a 2:2 UK Degree equivalent.
Kazakhstan	A minimum grade of Pass from a University Bachelor Degree for Postgraduate courses requiring a 2:2 UK Degree equivalent.

International Qualifications



Country	Qualification Title
Kenya	A minimum grade of Second Class Honours - Lower (52%) or 2.20 GPA from a University Bachelor Degree for Postgraduate courses requiring a 2:2 UK Degree equivalent.
Lebanon	A minimum grade of 70% from a University Bachelor Degree for Postgraduate courses requiring a 2:2 UK Degree equivalent.
Macau	A minimum grade of Third Class Honours from a University Bachelor Degree for Postgraduate courses requiring a 2:2 UK Degree equivalent.
Malaysia	A minimum grade of 2.40 from a University Bachelor Degree for Postgraduate courses requiring a 2:2 UK Degree equivalent.
Morocco	A minimum grade of 10.20 from the Licence / Licence d'Études Fondamentales / Licence Professionnelle for Postgraduate courses requiring a 2:2 UK Degree equivalent.
Netherlands	A minimum grade of 6.3 from a University Bachelor Degree for Postgraduate courses requiring a 2:2 UK Degree equivalent.
New Zealand	A minimum grade of B- or Second Class (Division II) from a University Bachelor Degree for Postgraduate courses requiring a 2:2 UK Degree equivalent.
Nigeria	A minimum grade of Second Class Lower Bachelor Degree for most Postgraduate courses requiring a 2:2 UK Degree equivalent.
Norway	A minimum grade of D from the Bachelorgrad (University Bachelor Degree) for Postgraduate courses requiring a 2:2 UK Degree equivalent.
Pakistan	A minimum GPA of 2.30 from a University Bachelor Degree for Postgraduate courses requiring a 2:2 UK Degree equivalent.
Poland	A minimum grade of 3.5 from a University Bachelor Degree for Postgraduate courses requiring a 2:2 UK Degree equivalent.
Portugal	A minimum grade of 12 from the Licenciado for Postgraduate courses requiring a 2:2 UK Degree equivalent.
Romania	A minimum grade of 7.00 from a University Bachelor Degree for Postgraduate courses requiring a 2:2 UK Degree equivalent.
Russia	A minimum grade of Pass from a University Bachelor Degree or Specialist Diploma for Postgraduate courses requiring a 2:2 UK Degree equivalent.
Saudi Arabia	A minimum grade of Pass from a University Bachelor Degree for Postgraduate courses requiring a 2:2 UK Degree equivalent.
Singapore	A minimum grade of Third Class Honours (low) or Pass (high) Honours from a University Bachelor Degree (Honours) for Postgraduate courses requiring a 2:2 UK Degree equivalent.
South Korea	A minimum grade of 2.8 from a University Bachelor Degree for Postgraduate courses requiring a 2:2 UK Degree equivalent.
Spain	A minimum grade of 6.2 (out of 10) or 1.4 (out of 4) from the Título Universitario Oficial de Graduado en [subject area] (Grado) or a minimum grade of 5.8 (out of 10) or 1.4 (out of 4) from the Título Universitario Oficial de Licenciado / Ingeniero / Arquitecto (Licenciatura) for Postgraduate courses requiring a 2:2 UK Degree equivalent.
Sri Lanka	A minimum grade of Second Class (Lower Divisions) from a University Special/Honours/Professional Bachelor Degree for Postgraduate courses requiring a 2:2 UK Degree equivalent.

Country	Qualification Title
Switzerland	A minimum grade of 4.4 from a University Bachelor Degree for Postgraduate courses requiring a 2:2 UK Degree equivalent.
Taiwan	A minimum grade of 65% from a University Bachelor Degree for Postgraduate courses requiring a 2:2 UK Degree equivalent.
Thailand	A minimum grade of 2.15 from a University Bachelor Degree for Postgraduate courses requiring a 2:2 UK Degree equivalent.
Turkey	A minimum grade of Basarili (2.10) from the Lisans Diplomasi (University Bachelor Degree) for Postgraduate courses requiring a 2:2 UK Degree equivalent.
Uganda	A minimum grade of Lower Second Class from a University Bachelor Degree for Postgraduate courses requiring a 2:2 UK Degree equivalent.
United Arab Emirates	A minimum grade of 2.1 from a University Bachelor Degree for Postgraduate courses requiring a 2:2 UK Degree equivalent.
United States	A minimum grade of 2.40 from a University Bachelor Degree for Postgraduate courses requiring a 2:2 UK Degree equivalent.
Vietnam	Bachelor Degrees from Vietnam may be considered if a dissertation or research project has been completed and a minimum grade of 8.5 (out of 10) or 4 (out of 4) achieved for Postgraduate courses requiring a 2:2 UK Degree equivalent.
Zimbabwe	A minimum grade of 60% from a University Bachelor Degree (Honours) for Postgraduate courses requiring a 2:2 UK Degree equivalent.

Please be aware that grade requirements may vary for different courses. If you are unsure of the grade required for entry, please contact our Admissions Team directly. In addition to the qualifications above, you will also be required to meet our English Language entry requirements. See page 22 for more information.



Paying for your course

A postgraduate degree is a great investment, allowing you to pursue in-depth study of a subject you are passionate about and gain valuable, employable skills.



SCOLARSHIPS

YORK ST JOHN INTERNATIONAL SCHOLARSHIP

We offer competitive scholarships of up to £1,000 for all International postgraduate and research students who study at our York Campus.

CHEVENING SCHOLARSHIPS

Since 1983, Chevening has brought over 50,000 exceptional applicants from around the world to study in the UK through scholarships and fellowships funded by the UK government.

Follow this link to find out more:
www.chevening.org

YORK CAMPUS FEES

- PG Taught – MSc (1 year) **£13,000***
- PG Taught – MA (1 year) **£13,000***
- PG Taught – MRes (1 year) **£13,000***
- PG Taught - MBA Venture Creation Labs (2 years) **£14,400**
- PG Taught - MBA Year with Professional Practice (2 years) **£14,400**
- ISME Top-up MBA **£4,400**
- PG Taught - PG Cert **£4,333**
- PG Taught - PG Dip **£8,667**

* Some courses vary in price, please look up your chosen course online to confirm fees

FUNDING

EU STUDENTS

We accept a variety of funding options such as the Norwegian state loans, German DAAD funding and government sponsored students from a range of countries. For further information speak to our funding advice team at: fundingadvice@yorks.ac.uk or call +44 (0)1904 876939.

US students are entitled to federal loans. More detailed information is available at: www.yorks.ac.uk/international/funding-opportunities/loans-for-us-students/

Information for EU students will be updated on our website. For more information please contact: IntDev@yorks.ac.uk

Living costs



The Cost of living in York will vary on your lifestyle, however, with some planning and a sensible budget you will find that living in the UK can be easily affordable. In addition to tuition fees, you will need to budget for living expenses such as accommodation, food and travel. UK Visa and Immigration (UKVI) requires you to have a budget of at least £1,023 per month to study in the UK (outside of London) in addition to your tuition fees. University accommodation costs from just £104 per week.

Being a student in York is relatively affordable compared to much of the UK and the city and Students' union offer many ways to save money. Visit: www.yorks.ac.uk/student-services/funding-advice

The cost of living in London will be higher. For accommodation visit: www.yorks.ac.uk/london-campus/study-in-london/. UK Visa and Immigration (UKVI) requires you to have a budget of at least £1,334 per month to study in London, in addition to your tuition fees.



ACCOMMODATION

£104 - £162 PER WEEK

We offer all international students, based in York, the chance to live in their choice of University-owned accommodation at affordable rates.



DINING OUT

£7 - £10 PER MEAL

York has a huge range of restaurants from take-aways and cafes to modern eateries and high-end restaurants. There are lots of deals available and you can easily eat out for less than £10.



FOOD SHOPPING

£25 - £40 PER WEEK

There is a choice of supermarkets close to the University. For specialist Asian choices try Regency Supermarket and Oriental Express. For Afro-Caribbean food go to Jojo's in Acomb. Makkah International Food sell a range of Halal items.



WELLBEING

£10 - £20 PER WEEK

There is a fitness suite on our main campus. As well as the gym you can join a choice of classes.



LIVING COSTS

COFFEE **£2.50 - £3.50 EACH**
MOBILE PHONE **£5 - £10 A WEEK**
CINEMA **£5 - £7**
DAY TRANSPORT TICKET **£3**

Make your money go further



WORKING

If you're studying a full degree on a Student Visa you may be able to work up to 20 hours per week during term time. Our careers service, LaunchPad, can help you to find work.

NUS CARD

You are entitled to an NUS card, which you can get from the Students' Union. This card offers many discounts all around York and the UK, as well as online.

YORK RESIDENTS' FESTIVAL

If you're in York at the end of January, look out for the York Residents' Festival, which offers residents and students free entry to many attractions, plus discounts in shops and restaurants. Visit: www.visityork.org for more information.

LONDON

Enjoy thousands of free events, galleries, buildings, museums, parks and more. Visit: visitlondon.com for more information. You can also sign-up for discounted student travel and save 30% on London travelcards. Visit: tfl.gov.uk/campaign/student-travel for details.



MONEY ADVICE

York St John University has invested in an online money education tool called Blackbullion. You can prepare for the financial reality of university life by completing the International Student pathway section. Register at: www.blackbullion.com. This online tool is designed so that you can learn at your own pace and develop your skills to help make the best financial decisions in the future.

STUDENT FUNDING ADVICE TEAM

Get in touch with our dedicated student funding advice team for further information.

E: fundingadvice@yorks.ac.uk
T: +44 (0)1904 876939
W: yorks.ac.uk/money



OUR POST- GRADUATE COURSES



MSC COMPUTER SCIENCE (London Campus Only)

Duration: 1 year.

UK Entry Requirements:

An existing minimum 2:1 degree in a relevant subject area (or equivalent) or relevant professional experience.

Programme description:

The MSc Computer Science at York St John University has been developed to provide you with the advanced knowledge and skills essential for a career in the fast paced and growing Information Technology and Computer Science sector. You will develop your skills at York St John's London campus located close to the East London Tech City (or Silicon Roundabout), home to a cluster of over 35 tech businesses, where you can choose to complete your degree in conjunction with a year in industry. With options to study full or part-time; to select a programme with or without a year in industry; and with 3 starting points of the programme in the year (January, May and September), there are a lot of options to choose the study mode which suits you.

Topics include:

Artificial Intelligence and Machine Learning / Cloud Computing
Internet of Things / Big Data / Agile Software Development

Specialisations:

Computer Science MSc with a year in Industry (2-year duration).

Career Outcomes:

The degree provides you with the the necessary technical and higher-level reasoning skills required to become a computer scientist or IT professional.

Key Features of this Programme:

- Opportunities to gain real-world industry experience through a year in Industry.
- Work and Study in the Information Technology centre of London.

MSC OCCUPATIONAL THERAPY (PRE-REGISTRATION)

Duration: 2 years.

UK Entry Requirements:

An existing minimum 2:1 degree (or equivalent) in a relevant subject area or relevant professional experience.

Satisfactory DBS and medical screening.

Selected applicants will be invited to interview on a selection day (can be via Skype).

Programme description:

The programme uses problem-based learning to support you to become an autonomous learner, global in your outlook, socially responsible and self-reflective. During the course you will undertake 1000 hours of clinical practice under the supervision of a registered occupational therapist to enable you to support people with a range of difficulties to fully engage in their everyday lives.

Topics include:

Theory & Foundations of Occupational Therapy / Evidenced Practice and Research / Contexts of Professional Practice / Management, Innovation and Creativity / Research Project

Career Outcomes:

This 2-year accelerated course will prepare you for a career as an occupational therapist. Upon completion, you can seek professional registration within the UK. Both the Health and Care Professions Council (HCPC) and the Royal College of Occupational Therapists (RCOT) accredit this course.

Key Features of this Programme:

- Accredited by the Royal College of Occupational Therapists (RCOT) and the Health and Care Professions Council (HCPC).
- First class facilities including an Activities of Daily Living Suite and a range of clinical assessment resources.
- Minimum of 1000 hours on practice placements.

MSC PHYSIOTHERAPY (PRE-REGISTRATION)

Duration: 2 years.

UK Entry Requirements:

An existing minimum 2:1 degree (or equivalent) in a relevant subject area and knowledge of physiotherapy profession.

Satisfactory DBS and medical screening.

Programme description:

This course will help you develop as a reflective, person-centred physiotherapy practitioner by setting the core skills of physiotherapy within an evidence-based context. The programme is delivered using a blended-learning approach meaning there is a mixture of face-to-face and on-line learning, self-directed study and experiential learning. You will gain first-hand, practical experience of physiotherapy through professional placement opportunities and get the chance to learn leadership skills and engage in real-world service development projects.

Topics may include:

Physiotherapy Practice / Leadership and Service Development
Professional Practice Placements / Research in Practice

Career Outcomes:

This 2-year accelerated course will prepare you for a career as an occupational therapist. Upon completion, you can seek professional registration within the UK. Both the Health and Care Professions Council (HCPC) and the Chartered Society of Physiotherapy (CSP) accredit this course.

Key Features of this Programme:

- Accredited by the Chartered Society of Physiotherapy (CSP) and the Health and Care Professions Council (HCPC).
- First class facilities including spacious clinical labs and access to clinical simulation labs.
- Minimum of 1000 hours on practice placements.

HUMANISTIC COUNSELLING MA, PG DIP

Duration:

2 years part time (PG Dip) | 3 years part time (MA)

UK Entry Requirements:

An existing minimum 2:2 degree (or equivalent) in a relevant subject area or other recognised professional qualification. You must have satisfactorily completed, or be currently in the process of completing, a Certificate in Counselling Skills (gained in the UK), or equivalent. You must have experience of the use of counselling skills at work, in education, helping professions or in voluntary agencies. Progression onto the MA is achieved through successful completion of the Counselling PG Diploma.

Programme description:

Humanistic is an umbrella term for a range of approaches to counselling. These share a philosophical stance that every person is unique and capable of taking appropriate responsibility for managing their lives to their satisfaction. Humanistic counselling emphasises the client's active role in the counselling process. It pays particular attention to the here-and-now experience, the counselling relationship and the broader context of the client's life.

Topics include:

Humanistic counselling theory / Counselling skills and reflective practice / Personal and professional development.

Professional Accreditations:

The Postgraduate Diploma is accredited by the British Association of Counselling and Psychotherapy (BACP). On successful completion of the PG Dip, you will be eligible to apply for membership of the BACP Register (register of psychological therapists accredited under the Professional Standards Authority accredited register programme).

Career Outcomes:

On successful completion of the PG Dip, you will be eligible to apply for membership of the BACP Register (register of psychological therapists accredited under the Professional Standards Authority accredited register programme).

Key Features of this Programme:

- Academic staff drawing on a 30 year tradition of counsellor training at York St John University.
- Experienced practitioners, trainers and active researchers.
- We actively adopt an anti-racist, anti-homophobic, anti-sexist approach in all of our teaching.

PGCE PRIMARY (UNIVERSITY CENTRED AND SCHOOL DIRECT)

Duration: 1 year full-time (University Centred and School Direct); 2 years part-time (University Centred only)*.

UCAS Code Primary PGCE university centred full time:

X121 (lower primary) X171 (upper primary).

UCAS Code Primary PGCE university centred part time:

Q859 (lower primary) S198 (upper primary).

UCAS Code Primary PGCE School Direct: Codes for each school partnership can be found on the UCAS teacher training website.

UK Entry Requirements:

You must meet the following entry requirements stipulated by the DfE (ITT Criteria 2019) for all programmes leading to Qualified Teacher Status (QTS):

- GCSEs in English, Mathematics and Science at grade C/4 or above (or equivalent)
- A first degree (honours) from a United Kingdom higher education institution or equivalent
- Pass a satisfactory medical report and a satisfactory Enhanced DBS check

Programme description:

The Primary PGCE provides you with the skills and professional expertise required to succeed as a teacher. The course develops your knowledge of the primary curriculum and wider educational issues to ensure you are equipped with a strong curriculum and wider professional identity. Our programme combines theory and practice to develop you as a well-informed, reflective and critical newly qualified teacher and leader, ready to be responsible for teaching and learning. The programme has a blend of:

- University and school based academic sessions and training
- A professional and a curriculum studies module both underpinned by current research
- Critical reflection on educational theory and practice, policy and contemporary issues
- School based application of theory into practice to support development of pedagogy
- Teaching and learning opportunities that support your development as a researcher

There are two routes for Primary PGCE, both of which lead to Qualified Teacher Status:

University-Centred: This option is offered as either a full time or part time route*. For the full time option you will spend two-thirds of your PGCE year on school placements and one third of your time studying at university. You complete 120 days of school-based training over the course of the year. This can include experiential placements in settings such as playgroups or nurseries. For the part-time option academic study and school experience takes place over two years.

PGCE PRIMARY (UNIVERSITY CENTRED AND SCHOOL DIRECT) Continued...

School Direct: On this route you will train with one of our Teaching School Alliance partners and the majority of your time will be spent at school. You will be fully immersed in your placement from the start and your academic learning will take place both at university and within the teaching school.

Both routes are academic and integrate theory with practice. You will study two Masters level modules which include for example, theories of learning, pupil development, curriculum studies relating to the primary curriculum and the wider professional role of the teacher. Each module has 30 credits; if you successfully complete the PGCE programme you will therefore have 60 credits that could potentially be used towards a full Masters level degree (subject to a successful application to the Masters degree). In addition, you will complete 3 school experience modules.

Topics include:

Understanding factors that influence pupil learning / Developing the skills of an effective teacher / Importance of the learning environment / Developing as reflective practitioners / Building subject knowledge and understanding / Emerging professional identity / Developing pedagogic skills, knowledge and understanding / Understanding schools as organisations / Working with others

Professional Accreditations:

York St John University is an accredited Initial Teacher Training provider. On successful completion of this course you will be recommended to the Teaching Regulation Agency for the award of Qualified Teacher Status (QTS), which is the relevant qualification to teach in England or Wales. International students seeking a teaching career outside of England and Wales should check teacher registration requirements in their destination jurisdiction.

Career Outcomes:

This course is designed around preparing student teachers to become teachers. As such employment rates are high with the large majority of students going into teaching, many within our partnership schools as well as across the country.

Key Features of this Programme:

- At the heart of the programme is a commitment to developing strong partnerships and collaborative working practices.
- Experience a programme commended by Ofsted for 'creating the teachers of the future' that are 'classroom ready.'
- High quality individual support through all stages of your training.
- Enrichment and enhancement opportunities including an opportunity for a short international enrichment placement.
- Feel part of a community with a real heritage; YSJ have been training teachers since 1841.

* International students are not able to undertake part time study options.

PGCE SECONDARY (UNIVERSITY CENTRED AND SCHOOL DIRECT)

Duration: 1 year full-time (university centred and School Direct).

UCAS Code Secondary PGCE Religious Education (university centred): V6X1.

UCAS Code Secondary PGCE School Direct offered in subjects as follows:

English, Mathematics, Biology, Chemistry, Physics, Modern Foreign Languages, History, Geography, Music, Drama, Physical Education, Religious Education.

Please note there are different UCAS codes for each subject we offer for each school partnership (these can be found on the UCAS teacher training website).

UK Entry Requirements:

You must meet the following entry requirements stipulated by the DfE (ITT Criteria 2019) for all programmes leading to Qualified Teacher Status (QTS):

- GCSE's in English and Mathematics at grade C/4 or above (or equivalent). If applying for a science PGCE programme you will also need a GCSE in Science at grade C/4 or above.
- A first degree (honours) of a United Kingdom higher education institution or equivalent. This degree should be specific to the subject based PGCE you are applying for.
- Pass a satisfactory medical report and a satisfactory Enhanced DBS check.

Programme description:

The Secondary PGCE provides you with the skills, understanding and professional knowledge you need to succeed as a teacher. We are committed to developing education and training that is current and relevant and that provides excellent opportunities for you to develop your knowledge and understanding of your subject and wider educational issues. This will ensure you will be equipped to be an outstanding teacher and leader with both a strong subject and wider professional identity.

Our PGCE Secondary programme combines educational theory and practice in developing you as a well-informed, reflective and critical teacher, ready to be responsible for teaching and learning as a newly qualified teacher.

The programme has a blend of:

- University and school based academic sessions and training
- A professional and a subject studies module both underpinned by current research
- Critical reflection on educational theory and practice, policy and contemporary issues
- School based application of theory into practice to support development of pedagogy
- Teaching and learning opportunities that support your development as a researcher

There are two routes for Secondary PGCE, both of which lead to Qualified Teacher Status:

1. A university-centred programme in Religious Education
2. School Direct programme in the subjects indicated above

PGCE SECONDARY (UNIVERSITY CENTRED AND SCHOOL DIRECT) Continued...

On university-centred RE route you will spend two-thirds of your PGCE year on school placements and one third studying at university. On the School Direct route you will train with one of our Teaching School Alliance partners and the majority of your time will be spent at school. You will be fully immersed in your placement from the start and your academic learning will take place both at university and within the teaching school.

Both routes are academic and integrate theory with practice. You will study two Masters level modules which include for example, theories of learning, pupil development, subject studies relating to the secondary curriculum and the wider professional role of the teacher. Each module has 30 credits; if you successfully complete the PGCE programme you will therefore have 60 credits that could potentially be used towards a full Masters level degree (subject to a successful application to the Masters degree). In addition, you will complete 3 school experience modules.

Topics include:

Understanding factors that influence pupil learning / Developing the skills of an effective teacher / Importance of the learning environment / Developing as reflective practitioners / Building subject knowledge and understanding / Emerging professional identity / Developing pedagogic skills, knowledge and understanding / Understanding schools as organisations / Working with others

Professional Accreditations:

York St John University is an accredited Initial Teacher Training provider and on successful completion of this course you will be recommended for the award of Qualified Teacher Status (QTS) by the Teaching Regulation Agency.

Gaining QTS means you can be employed to teach in a maintained school, or non-maintained special school, in England or Wales, and will be paid under the school teachers' pay scales.

Career Outcomes:

This course is designed around preparing student teachers to become teachers. As such employment rates are high with the large majority of students going into teaching, many within our partnership schools as well as across the country.

Key Features of this Programme:

- At the heart of the programme is a commitment to developing strong partnerships and collaborative working practices.
- Experience a programme commended by Ofsted as having outstanding leaders who have 'clear vision, relentless drive and well targeted actions' where 'The university, teaching school alliances and schools demonstrate a common vision and shared commitment to teacher training'.
- High quality individual support through all stages of your training.
- Enrichment and enhancement opportunities including an opportunity for a short international enrichment placement.
- Feel part of a community with a real heritage; YSJ have been training teachers since 1841.

MA SPECIAL EDUCATIONAL NEEDS AND INCLUSION

Duration: 2 years part-time.

UK Entry Requirements:

An existing minimum 2:1 degree (or equivalent) in a relevant subject area.

If you have a PGCE which you have gained within the last five years, we can recognise up to 60 relevant M-level credits.

Programme description:

At present, the UK (and many other countries around the world) urgently require highly-skilled practitioners with an understanding of issues relating to children and young people with Special Educational Needs and Disabilities (SEN/D). On this programme, you will have the opportunity to explore in detail the concepts that underpin a range of policies and practices, so that you are able to make a real difference to the lives of young people with SEN/D.

Topics include:

Leading and evaluating change in the SEN/D context / Conducting inclusive research / Innovating practice for young people with special educational needs / Transitions across the life course / Evaluating inclusion / Global perspectives on education / Critical contemporary issues in education a national context / Independent study/Dissertation

Career Outcomes:

Graduates of our Special Educational Needs and Inclusion MA programme are typically employed as Primary/Secondary/Special Educational Needs teachers and co-ordinators, community education officers, education administrator/managers/consultants, in settings as varied as schools, colleges, third sector and local authority-funded workplaces.

Key Features of this Programme:

- This programme provides a clear progression for SEN-coordinators (SENCOs) who may have previously completed a Postgraduate Certificate Award (see below).
- On the programme, you will develop the research skills needed for analysis and appraisal of SEN/D provision.
- Our staff are research-active and will support you to develop a cutting-edge, research-informed understanding of your own professional context.

MA LANGUAGE AND SOCIAL JUSTICE

Duration: 1 year full-time, 2 years part-time.

UK Entry Requirements:

An existing minimum 2:2 degree (or equivalent) in a relevant subject area.

Programme description:

On this Language & Social Justice MA you will examine the contribution of Applied Linguistics to a range of social justice agendas. Benefitting from studying within a School which is renowned for its excellence and innovation in learning and teaching, as well as its world-leading research in language and social justice, you will become part of our thriving research community. Students wanting to learn another language should apply for the MA Language and Social Justice with British Sign Language - the preferred language of over 87,000 people in the UK.

Topics include:

Language Myths / Approaches to Critical Discourse Analysis / Case Studies in Language and Social Justice / Research Methods / Final Project or Dissertation

Specialisations:

Language and Social Justice with British Sign Language MA.

Professional Accreditations:

Students on the Language and Social Justice with British Sign Language MA can elect to take the nationally recognised Signature British Sign Language qualification during level 6 for no additional fee. This is valuable if you wish to work with deaf people after graduation.

Career Outcomes:

The programme is also aimed at current and prospective policy-makers, councillors, teachers and educational leaders, journalists, local government workers, police, marketing professionals, budget holders, charity workers, NHS managers, campaign managers, advocates and magistrates, as well as retired people and anyone interested in pursuing social justice-related work or activism.

Key Features of this Programme:

- Get involved in staff research projects, and earn money, through our 'Students as Researchers' scheme.
- Organise and participate in events, trips, conferences, and volunteering opportunities on campus and in the City of York, getting the kind of experience that will make your CV stand out.
- Study in our specialist spaces; including the Languages Workshop and the Linguistics Lab.
- Co-organise and present at the yearly conference run by Languages and Linguistics post-graduate students, Postgraduate Forum in Applied Linguistics (PFAL).

MA TESOL

Duration: 1 year full-time, 2 years part-time.

UK Entry Requirements:

An existing minimum 2:2 degree (or equivalent) in a relevant subject area.

Programme description:

Our approach to TESOL (Teaching English to Speakers of Other Languages) focuses on teaching English in a multilingual world. Successful students will be able to adapt materials and methods to diverse contexts, and challenge conventional thinking in TESOL policies and practices. You will explore theoretical issues in second language learning and apply these to your teaching. You will gain practical experience in lesson planning and delivery, exploring how to adapt materials and methods to a range of teaching situations. You will study alongside students from across the world, gaining experience of different nationalities and educational cultures. Students wanting to learn another language should apply for the MA TESOL with Chinese, Japanese, Korean or Thai.

Topics may include:

Language Myths / Second Language Acquisition / Theory and Practice in Language Teaching / Research Methods / Final Project or Dissertation

Specialisations:

TESOL with Chinese/Korean/Japanese/Thai

Professional Accreditations:

Students on these programmes are eligible to apply for the Cambridge Assessment English Certificate in Teaching English to Speakers of Other Languages (CELTA). If you are thinking about teaching English as an additional language, the CELTA is the world-leading professional qualification and is available to students on this programme at no extra cost.

Career Outcomes:

This programme is designed for both TESOL professionals and those who wish to pursue TESOL careers in the future. Future careers include materials design, assessment, and public policy as well as teaching. Graduates may also go to doctoral level study.

Key Features of this Programme:

- Get involved in staff research projects, and earn money, through our 'Students as Researchers' scheme.
- Organise and participate in events, trips, conferences, and volunteering opportunities on campus and in the City of York, getting the kind of experience that will make your CV stand out.
- Study in our specialist spaces; including the Languages Workshop and the Linguistics Lab.
- Co-organise and present at the yearly conference run by Languages and Linguistics post-graduate students, Postgraduate Forum in Applied Linguistics (PFAL).

MSC PSYCHOLOGY OF CHILD AND ADOLESCENT DEVELOPMENT

Duration: 1 year full-time, 2 years part-time.

UK Entry Requirements:

An existing minimum 2:1 degree (or equivalent) in a relevant subject area.

In cases where there has been exceptional performance on the final year project, mitigating circumstances, or relevant employment can be demonstrated, you may be considered if you have a 2:2.

Satisfactory DBS screening.

Programme description:

The MSc Psychology of Child and Adolescent Development takes an expanded view of development, moving beyond the traditional focus on childhood into adolescence. Led by an experienced team of developmental psychologists, students develop advanced knowledge of social, emotional, cognitive and neurobiological development. The programme features cutting-edge topics in child and adolescent development, combined with advanced training in psychological research methods. It culminates with a major independent research project, with supervision, in an area of child and/or adolescent development.

Topics include:

Social, emotional, cognitive and neurobiological aspects of child and adolescent development / Contemporary issues in child and adolescent development (e.g., bullying, body image and neurodiversity) / Advanced qualitative research methods / Advanced quantitative research methods / Contemporary issues in psychological research (e.g. open science, ethics and impact)

Career Outcomes:

The MSc in Psychology of Child and Adolescent Development is aimed at students interested in pursuing careers working with children and young people (e.g. teaching, educational psychology, clinical psychology) and/or in continuing to further postgraduate study in the field of developmental psychology.

DOCTORATE OF COUNSELLING PSYCHOLOGY (DCOUNSPSY)

Duration: 3 years full-time.

UK Entry Requirements *:

Graduate Basis for Chartered Membership (GBC) with British Psychological Society (BPS).

Satisfactory DBS screening.

Two references.

A personal statement (maximum 1000 words).

A commitment to undertake personal therapy and clinical supervision.

* Places in this programme are limited and entry is competitive. Applicants must be willing to be interviewed in May or June each year.

Programme description:

This programme places an emphasis on both cognitive-behavioural and humanistic approaches to the development of counselling and psychotherapy skills. You will undertake training in psychological assessment; psychotherapeutic interventions over the lifespan; clinical research methods; ethics and professional practice; a doctoral research dissertation; and requires a minimum of 450 hours of placement in clinical settings. Students also undertake modules that develop the professional skills required of leaders and supervisors, and for working in diverse, multi-disciplinary teams.

Topics may include:

Counselling and psychotherapy skills / Psychological assessment / Professional practice and ethics / Research methods and an independent research project / Individual psychotherapy skills (across the lifespan) / Group psychotherapy / Psychopathology and advanced psychotherapy skills

Professional Accreditations:

As a graduate of this programme, you will be eligible to apply for registration as a Practitioner Psychologist with the Health & Care Professions Council (HCPC). The programme is also accredited by the British Psychological Society.

Career Outcomes:

This programme provides the clinical and research training for those wishing to work as a Counselling Psychologist. Counselling Psychologists use psychological theory and research in therapeutic work to help clients with a range of mental health issues and distress. They work across a diversity of health and social care environments (e.g., NHS, outpatient and inpatient units, community organisations, educational institutions, forensic settings), and in independent practice.

MRES PSYCHOLOGY

Duration: 1 year full-time, 2 years part-time.

UK Entry Requirements:

An existing minimum 2:1 degree (or equivalent) in a relevant subject area.

Outline research proposal developed in consultation with a member of the psychology academic team (200 words).

Programme description:

The Psychology MRes prepares students for the next steps in their research career, acting as a stepping stone between undergraduate study and careers in research and/or PhD study. The programme offers high quality research methods training aligned with the Economic and Social Research Council (ESRC) Postgraduate Training and Development Guidelines. In addition, students will undertake an extended independent research project as part of a team in an established area of research. In addition to providing students with an advanced level research qualification, the course provides opportunities for development of valuable transferable skills including data collection and analysis; research design; decision making; critical thinking; independent learning; and presentation skills.

Topics include:

Advanced qualitative research methods / Advanced quantitative research methods / Contemporary issues in research (e.g. open science, ethics and impact)

Career Outcomes:

The course is ideal preparation for a PhD in Psychology, or a future career in industry research.

MA CONTEMPORARY LITERATURE

Duration: 1 year full-time, 2 years part-time.

UK Entry Requirements:

An existing minimum 2:1 degree (or equivalent) in a relevant subject area.

Programme description:

This is an exciting and diverse programme that allows you to engage with how recent writing confronts and critiques concepts of the contemporary. Focusing mostly on 21st century work, you will have the opportunity to develop your voice as a literary critic and work on developing your own research areas in relation to the contemporary. You will read all kinds of writing – from radical poetry to speculative fiction and experimental memoir – as well as a range of prize-winning recent literature.

Topics may include:

Theorising the contemporary moment / Historical fiction, and the challenges of writing the past / Contemporary forms and genre / Speculative bodies and speculative fictions / Contemporary literature from around the globe / Prize culture and the literary scene

Career Outcomes:

Our students have gone on to do the following:

- Further postgraduate study
- Publishing
- Journalism
- Teaching
- Charity sector
- Heritage and museum work

Key Features of this Programme:

- A chance to work with our team of expert staff.
- The opportunity to engage with a decolonised curriculum that often champions the voices of writers who have been marginalised.
- A range of assessment modes (including essays, bibliographies and a roundtable) to help your professional development throughout your MA journey.

MA CREATIVE WRITING

Duration: 1 year full-time, 2 years part-time.

UK Entry Requirements:

An existing minimum 2:1 degree (or equivalent) in a relevant subject area.

1,000 word writing sample.

Programme description:

The York Centre for Writing at York St John University offers an exciting range of postgraduate courses, supported by published, award-winning writers and academics who can facilitate fiction, non-fiction, poetry and scriptwriting. Our taught Masters in Creative Writing allows you to pursue your own creative interests whilst exploring eco-criticism, writing in a global and local context, and learning to facilitate creative writing. While you are here you will amass a strong creative portfolio as well as key critical thinking skills.

Topics include:

You will pursue your own creative interests while exploring:

Eco-criticism / Writing in a global and local context / Learning to facilitate creative writing

Career Outcomes:

- Successful author
- Teacher
- Publisher
- Literary Agent
- Journalist

Key Features of this Programme:

- Work with award-winning writers.
- Regular writing retreats in the beautiful Yorkshire region*.
- Student publication opportunities.
- Partnership with the York Literature Festival.
- You will become part of a vibrant and inspiring writing community.

*Residentials are subsidised by the University but you may be asked to pay a small contribution.

MA PUBLISHING

Duration: 1 year full-time, 2 years part-time.

UK Entry Requirements:

An existing minimum 2:1 degree (or equivalent) in a relevant subject area.

Awards:

MA in Publishing / MA in Publishing and Creative Writing /
MA in Publishing with Contemporary Literature

Programme description:

The MA in Publishing suite of programmes are part of a thriving postgraduate writing and creative industries community housed within the York Centre for Writing. The MA offer modules which allow students to pursue their own interests, whilst foundational, core modules ensure that all students develop a range of key skills in publishing, critical reflection and creative practice, dependent on the strand of MA being followed. Class sizes are kept to small, intimate groups to enable collaborative practice so that you can share and workshop ideas, concepts and writing in progress and hone your editorial skills. You are provided with the opportunity to understand, analyse and engage with the world of publishing with a focus on the independent sector. This will be put into practice by working on the York Literary Review, taking this established publication through the entire process from conception to distribution. The York Literary Review is a journal of original literature (including prose, poetry, non-fiction and art) the parameters of which will be set by the students. You will gain an insight into creative writing as an academic subject, interrogating the place of writing in cultural, political and environmental contexts, through the study of literature and the practice of writing. You will also have the opportunity to deepen your professional skills through a range of exciting opportunities, including the chance to have a one to one meeting with an agent, publisher or editor, and to meet industry professionals.

Topics include:

Practical skills in Publishing / Understanding of contemporary literary cultures /
Experiential learning in publishing the York Literary Review

Career Outcomes:

- Successful author
- Teacher
- Publisher
- Literary Agent
- Journalist

Key Features of this Programme:

- Publish the York Literary Review, from conception to distribution.
- Work with award-winning writers.
- Opportunities to work with independent publishers.
- Group sessions online and working one-to-one with tutors.
- Regular writing retreats in the beautiful Yorkshire region*.
- Student publication opportunities.
- Partnership with the York Literature Festival.
- You will become part of a vibrant and inspiring writing and literary communities.

*Residentials are subsidised by the University but you may be asked to pay a small contribution.

MFA CREATIVE WRITING

Duration:

UK Entry Requirements:

Completion of a related MA.

Programme description:

We are one of the only universities in the UK to offer a Master of Fine Arts programme, one which serves as the next step from a taught MA in that it enables students to develop a full-length book under expert supervision. Additionally, our programme includes a one to one bespoke session with an agent or publisher. For those wishing to move onto PhD study, we can nurture a range of critical and creative projects.

Career Outcomes:

- Successful author
- Teacher
- Publisher
- Literary Agent
- Journalist

Key Features of this Programme:

- Produce a substantial piece of writing (novel, feature-length film, poetry collection, etc.).
- Work with award-winning writers.
- Group sessions online and working one-to-one with tutors*.
- Regular writing retreats in the beautiful Yorkshire region*.
- Student publication opportunities.
- Partnership with the York Literature Festival.
- You will become part of a vibrant and inspiring writing community.

MA HISTORY

Duration: 1 year full-time, 2 years part-time.

UK Entry Requirements:

An existing minimum 2:1 degree (or equivalent).

Programme description:

Study the past in one of England's most beautiful and historic cities. Set in the historic heart of York, our MA offers a stimulating programme of study, led by our team of internationally recognised scholars. The programme will provide you with a distinct and flexible opportunity to develop your own projects and your interests in social, cultural or political history, from the early modern period to the present. Through an independent research dissertation, you will have the chance to choose your own specialism and focus on what interests you most.

Topics include:

The relationship between 'people' and 'power' studied through a series of case studies, using international, national and local archives. In previous years, we had case studies of surveillance in parishes during the English Civil War, scandals in eighteenth-century newspapers, prison lives in Victorian York and Australian penal colonies, along with a study of women's letters to the Russian State in the 1920s / The history of social transformations, such as how and why societies have constructed impediments and barriers to social change, and how these barriers have been overcome / The post-1945 world which has offered unprecedented threats to international security and even human survival, such as the Cold War and nuclear diplomacy / The application of digital technologies in historical scholarship and public history (exhibitions, archiving, citizen history etc.)

Career Outcomes:

Our students have gone on to do the following:

- Further postgraduate study
- Teaching
- Civil Service
- Heritage sector
- Digital communications

Key Features of this Programme:

- Our module 'Digital Humanities for Historians' will offer you a unique opportunity to become an independent, confident and digitally literate researcher.
- You will be taught by historians who are undertaking cutting edge research in social, cultural and political history.

MA INTERNATIONAL HISTORY

Duration: 1 year full-time, 2 years part-time.

UK Entry Requirements:

An existing minimum 2:1 degree (or equivalent).

Programme description:

Throughout the programme you will gain in-depth knowledge of the fascinating International History of the 20th and early 21st centuries through your choice of seminar and coursework assignments. In addition, through an independent dissertation you will have the chance to choose your own specialism and focus on what interests you most. You will be taught by staff with a broad range of expertise and research interests in International History.

Topics include:

The current methodological trends in International History / The imperial world system during the early 20th century / The Cold War and other post-war threats to international security / The era of decolonisation and the postcolonial world

Career Outcomes:

Our students have gone on to do the following:

- Further postgraduate study
- Teaching
- Civil Service
- Heritage sector

Key Features of this Programme:

- Immerse yourself in a dynamic, varied and challenging field of academic study, with the emphasis on the 20th and 21st centuries.
- Be taught by historians who are conducting cutting-edge research in the field of International History, including recently producing books on the Soviet Union and the Korean War.

MA RELIGION IN SOCIETY

Duration: 1 year full-time, 2 years part-time.

UK Entry Requirements:

An existing minimum 2:1 degree (or equivalent) in a relevant subject area.

Programme description:

Our Religion in Society MA offers you the opportunity to develop your knowledge and skills in philosophy of religion, theology or religious studies through critical exploration of the theory and practice of religion in society. Throughout the course, you will gain a deeper understanding of the current religious climate and the interrelation of secular and religious communities. The MA offers a varied and exciting programme taught by experienced, research-active academics; it is designed to develop your research and critical thinking skills, whether you intend to pursue future employment or further academic study in the field, or, whether you are exploring professional development and personal interest.

Topics include:

The Changing Face of Religion in Society / Religion, Gender and Sexuality / Religion, Media and Popular Culture / Religion and Peacebuilding

Career Outcomes:

Our graduates have found careers in teaching, law, social work, charity work, the media and many other areas.

Key Features of this Programme:

Our course is enhanced by the wide range of speakers invited to give Ebor lectures and supported by the Centre for Religion in Society. Speakers to date have included journalists, politicians, theologians and activists, such as Julie Nicholson, Tariq Madood, Clare Short, Tony Benn, David Ford, Frances Young, Natalie Samarasinghe, Bhiku Parek, Lyse Doucet, Ruth Hunt, Olav Fykse Tveit.

MA VISUAL COMMUNICATION

Duration: 1 year.

UK Entry Requirements:

An existing minimum 2:2 degree (or equivalent) in a relevant subject area.

We prefer an applicant with a minimum 2:1 degree but those with lower degrees, or a degree in an unrelated field may be invited to an interview based on a strong application.

Programme description:

You will be introduced to bespoke methods for designing digital experiences with the support of our industry partners. You will develop analytical and practical skills to help you develop, test and deliver exciting design solutions to a range of communication challenges.

You will explore a range of media in the fields of graphic design, branding, illustration, moving imagery, and virtual and augmented reality. You will be supported to create an exciting and contemporary personal portfolio of work informed by your research and practice.

The course will also prepare you to become more familiar in both virtual reality and augmented reality. You will have the chance to apply your creative talent and transferable skills through a diverse range of digital sectors to be ready to work in industry.

Topics include:

Design Thinking and Methodologies / Marketing Communication and Strategic Marketing Planning / Communication Design / Design and Innovation / Social Change / Circular Economy

Specialisations:

You will learn how to take an entrepreneurial approach to your work and understand how creative fields and business link together. The course will cover specific business modules, delivered by York Business School, so you can confidently pursue your career goals as specialised and highly skilled digital creative.

Professional Accreditations:

Students may wish to take our Adobe accredited workshops in areas such as Photoshop and Illustrator.

Career Outcomes:

Our Visual Communication MA is designed to help you develop your creative, imaginative and technical skills as a professional communicator. We will equip you with the skills to help you express your ideas in a creative and professional manner. You will gain the technical tools, the academic curiosity and the business confidence to pursue a successful and rewarding career in this field. Students will discover new career pathways as a graphic designer, illustrator, printmaker, filmmaker etc. and anything related to communication depending on their research route and overall interest.

Key Features of this Programme:

- Develop employability skills through working alongside industry practitioners.
- Focus your own research development through practice and theory.
- Work alongside YSJ Business School to develop skills in both marketing and design.
- Experience and collaborate with other design practitioners to create new innovative outcomes.

MA VIRTUAL AND AUGMENTED REALITY

Duration: 1 year.

UK Entry Requirements:

An existing minimum 2:2 degree (or equivalent) in a relevant subject area.

We prefer an applicant with a minimum 2:1 degree but those with lower degrees, or a degree in an unrelated field may be invited to an interview based on a strong application.

Programme description:

This course will teach you how to design digital experiences. You will develop the analytical and practical skills needed to explore your creative ideas and achieve new and innovative outcomes.

This course will teach you everything you need to know about virtual and augmented reality design. You will explore several media platforms using both wearable and handheld devices to craft new digital experiences for a range of industries. You will apply your creative talent and skills to sectors such as marketing, education, television, film, gaming and more.

Topics include:

Design Thinking and Methodologies / Marketing Communication and Strategic Marketing Planning / Immersive Technologies / Design and Innovation / Social Change / Circular Economy

Specialisations:

You will learn how to take an entrepreneurial approach to your work and understand how creative fields and business link together. The course will cover specific business modules, delivered by York Business School, so you can confidently pursue your career goals as specialised and highly skilled digital creative.

Professional Accreditations: (if applicable)

Students may wish to take our Autodesk accredited workshops in areas such as 3D Maya. The programme is also affiliated to SONY Interactive, so students can create games for the online platform

Career Outcomes:

The rapidly growing industry of virtual and augmented reality allows creative professionals from diverse backgrounds to express themselves and design exciting new digital experiences. This specialist course equips you to join the next generation of digital creators in this emerging field, as virtual and augmented reality designers.

Key Features of this Programme:

- Develop employability skills through working alongside industry practitioners and using the latest VR and AR technologies.
- Focus your own research development through practice and theory.
- Work alongside YSJ Business School to develop skills in both marketing and design.
- Experience and collaborate with other design practitioners to create new innovative outcomes.

MSC 3D DESIGN & TECHNOLOGIES

Duration: 1 year.

UK Entry Requirements:

An existing minimum 2:2 degree (or equivalent) in a relevant subject area.

We prefer an applicant with a minimum 2:1 degree but those with lower degrees, or a degree in an unrelated field may be invited to an interview based on a strong application.

The 3D Design & Technologies programme aims to recruit applicants from a variety of background areas such as product, engineer, furniture, CAD (Computer Aided Design), ceramics, sculptor, or a practising designer maker who would like to hone and refine their skills, knowledge and competencies in the specialist field of design and technology.

Programme description:

Learn how to use a wide range of tools so that your designs are only limited by your imagination. Investigate new technologies and how they are changing the design industry. On this course you will learn to design and create using a variety of processes. You will explore mediums such as digital craft and 3D modelling, and design for real and virtual spaces. You will learn transferable skills so that you can apply your talents across a range of design sectors.

Smart technologies are changing how we use space and interact with our surroundings. You will study these technologies and consider how they are changing the design industry. You will work with professional designers to create digital experience and learn from their knowledge.

Topics include:

Design Thinking and Methodologies / Marketing Communication and Strategic Marketing Planning / Emerging Design Technologies / Design and Innovation / Social Change / Circular Economy

Specialisations:

You will learn how to take an entrepreneurial approach to your work and understand how creative fields and business link together. The course will cover specific business modules, delivered by York Business School, so you can confidently pursue your career goals as specialised and highly skilled digital creative.

Professional Accreditations: (if applicable)

Students may wish to take our Autodesk and Adobe accredited workshops.

Career Outcomes:

Technology is reshaping how designers work. On our 3D Design & Technologies MSc you will learn to use equipment and software to realise your designs. This course will enable you to move into pathways relating to user experience, human centred and disruptive technologies.

Key Features of this Programme:

- Develop employability skills through working alongside industry practitioners.
- Focus your own research development through practice and theory.
- Work alongside YSJ Business School to develop skills in both marketing and design.
- Experience and collaborate with other design practitioners to create new innovative outcomes.

MA APPLIED THEATRE

Duration: 1 year full-time, 2 years part-time.

UK Entry Requirements:

An existing minimum 2:2 degree (or equivalent) in a relevant subject area.

Programme description:

The programme is designed for those skilled in theatre and facilitation practices who wish to engage in an extended project of their own whilst developing critical academic skills alongside their practical skills. The supervised Independent Project module (120 credits) offers the opportunity for the student to engage with a significant community project that represents the culmination of their skills, knowledge and abilities. Along with this the student will develop reflective, critical and contextual work that articulates and communicates an understanding of their practice. This is supported by a taught applied practice module (40 credits) and an interdisciplinary Reflective Practitioner module (20 credits) where applied theatre practitioners get to discuss their work and network with other performance and production students.

Topics include:

Typical examples include (but are not limited to):

Working with female prisoners in prison / Working with theatre and mental health Service users

Specialisations:

All areas of practice are considered. The School currently has particular specialism in areas of social justice, with strong connections with women's prisons, 'Converge' Mental health Service users project, and dementia and performance projects.

Career Outcomes:

The programme helps to prepare students for independent practitioner work, further study in academia (with possible progression on to PhD) and for teaching roles.

Key Features of this Programme:

- Unique university connections to external applied projects.
- The long independent project offer opportunity to create a significant work or body of works.
- Networking with artists from other disciplines that may add complementary skills to your work.
- Opportunities to learn from visiting practitioners and facilitators.

MA COMMUNITY MUSIC

Duration: 1 year full-time, 2 years part-time.

UK Entry Requirements:

An existing minimum 2:1 degree (or equivalent).

Programme description:

Run in conjunction with the International Centre for Community Music (ICCM), the programme is designed for those already skilled in community music who wish to engage in an extended project of community practice whilst developing critical academic skills alongside their practical and facilitation skills. The supervised Independent Project module (120 credits) offers the opportunity for the student to engage with a significant body of community work that represents the culmination of their facilitation skills, knowledge and creativity. Along with this body of practice the student will develop reflective, critical and contextual work that articulates and communicates an understanding of their practice. This is supported by a taught community music methodologies module (40 credits) and an interdisciplinary Reflective Practitioner module (20 credits) where community music practitioners get to discuss their work and network with other performance and production students.

Topics include:

Typical examples include (but are not limited to):

Leading a community-based choir through a major project / Engaging with international community music projects through research and practice / Performing as a community musician leading on social justice agendas

Specialisations:

All areas of practice are considered. The ICCM has a particular focus on the international research and development of community music.

Career Outcomes:

The programme helps to prepare students for independent practitioner work, further study in academia (with possible progression on to PhD) and for teaching roles.

Key Features of this Programme:

- Run in conjunction with the International Centre for Community Music at York St John University.
- The long independent module offers opportunity to engage in a significant practical project.
- Networking with artists from other disciplines that may add complementary skills to your work.
- Opportunities to learn from visiting practitioners.

MA MEDIA PRODUCTION

Duration: 1 year full-time, 2 years part-time.

UK Entry Requirements:

An existing minimum 2:2 degree (or equivalent) in a relevant subject area.

Programme description:

The programme is designed for producers across a wide range of media (filmmaker, documentary, podcaster, radio producer etc.) who wish to engage in an extended project of their own productions whilst developing critical academic skills alongside their production skills. The supervised Independent Project module (120 credits) offers the opportunity for the student to engage with the production of a significant work or body of works that represent the culmination of their skills, knowledge and creativity. Along with this body of practice the student will develop reflective, critical and contextual work that articulates and communicates an understanding of their practice. This is supported by a taught module (40 credits) and an interdisciplinary 'Reflective Practitioner' module (20 credits) where producers get to discuss their work and network with other performance and production students.

Topics include:

Typical examples of a 'media product' include (but are not limited to):

Short film / Documentary / Social Media content / Podcast series

Specialisations:

Producers may specialise in any area of media production. Proposals are submitted to supervisors for consideration.

Being associated with the ASFF, the programme has specialisms in short film and documentary making.

Career Outcomes:

The programme helps to prepare students for independent production company work, work in production studios, further study in academia (with possible progression on to PhD).

Key Features of this Programme:

- Association with the Aesthetica Short Film Festival (ASFF).
- The long independent project offers opportunity to create significant professional products.
- Networking with artists from other disciplines that may add complementary skills to your work.
- Opportunities to learn from visiting lectures who are industry professionals.

MA MUSIC COMPOSITION

Duration: 1 year full-time, 2 years part-time.

UK Entry Requirements:

An existing minimum 2:1 degree (or equivalent).

Programme description:

The programme is designed for composers who wish to engage in an extended project of their own composition(s) whilst developing critical academic skills alongside their compositional skills. The supervised Music Composition Independent Project module (120 credits) offers the opportunity for the student to engage with the creation of a significant work or body of works that represent the culmination of their skills, knowledge and creativity. Along with this body of practice the student will develop reflective, critical and contextual work that articulates and communicates an understanding of their practice. This is supported by a taught Analysis & Composition module (40 credits) and an interdisciplinary Reflective Practitioner module (20 credits) where composers get to discuss their work and network with other performance and production students.

Topics include:

Typical examples include (but are not limited to):

Composing a symphony (and articulating its place in the present day) / Composing music for games on internet platforms / Composing an album of music for political protest

Specialisations:

Composers may specialise in any style or engage in multiple styles. The emphases is on personal creativity.

Career Outcomes:

The programme helps to prepare students for independent composition work, further study in academia (with possible progression on to PhD) and for teaching roles.

Key Features of this Programme:

- Taught by leading academics in the field of composition.
- The long independent project offer opportunity to create a significant work or body of works.
- Opportunities for performance of compositions.
- Networking with artists from other disciplines that may add complementary skills to your work.
- Opportunities to learn from visiting composers.

MA MUSICAL LEADERSHIP

Duration: 1 year full time or 2 years part time.

UK Entry Requirements:

An existing minimum 2:2 degree (or equivalent) in a relevant subject area.

Programme description:

Your practice as an ensemble leader is placed at the centre of this course. By studying a variety of key concepts relating to leadership, ensemble interaction, and musical development, you will reflect on your existing practice to further understand how it may improve. You will be given multiple opportunities to participate in university-based ensembles as a musical leader and work with your existing external ensembles too.

When you study our Reflective Practitioner module, you will work alongside students from the other courses on our postgraduate Music suite. This allows you to gain a cross-disciplinary awareness of musical leadership and its relationship with other key areas of musical study.

Topics include:

The reflective practitioner/ Calibrating ensemble leadership / Independent project in ensemble leadership.

Career Outcomes:

This course can help you in your career if:

- You are a freelance musician looking to improve your ability to lead ensembles in performance, production and pedagogic contexts.
- You are a freelance musician looking to improve the quality of ensembles you lead and participate in as a gigging musician.
- You are a freelance musician who wants to focus on recording with your ensemble, making you more efficient in achieving the desired quality of performance.
- You are a teacher who leads ensembles as part of your work – regardless of if you teach primary, secondary, or tertiary education.
- You are a community musician who wants to improve your ability to facilitate ensembles within the community.

Key Features of this Programme:

- Opportunities to participate in university-based ensembles.
- Opportunities to participate in external ensembles.
- Research opportunities with external groups.
- Cross-disciplinary awareness of musical leadership.

MA THEATRE AND PERFORMANCE

Duration: 1 year full-time, 2 years part-time.

UK Entry Requirements:

An existing minimum 2:1 degree (or equivalent).

Programme description:

The programme is designed for performance and theatre makers who wish to engage in an extended project of their own whilst developing critical academic skills alongside their practical skills. The supervised Independent Project module (120 credits) offers the opportunity for the student to engage with a significant body of performance work that represents the culmination of their skills, knowledge and creativity. Along with this body of practice the student will develop reflective, critical and contextual work that articulates and communicates an understanding of their practice. This is supported by a taught performance module (40 credits) and an interdisciplinary Reflective Practice module (20 credits) where practitioners get to discuss their work and network with other performance and production students.

Topics include:

Typical examples include (but are not limited to):

Writing, directing and performing a touring show / Writing, directing and performing stand-up comedy and improvisation / Live Art installation

Specialisations:

All areas of practice are considered. The emphasis is on personal creative development.

Career Outcomes:

The programme helps to prepare students for independent practitioner work, working with performance companies, further study in academia (with possible progression on to PhD) and for teaching roles.

Key Features of this Programme:

- The long independent project offer opportunity to create a significant work or body of works.
- Opportunities for performance and practice.
- Networking with artists from other disciplines that may add complementary skills to your work.
- Opportunities to learn from visiting practitioners.

FINE ART MFA

Duration: 2 years full time.

UK Entry Requirements:

A minimum of a 2:1 undergraduate degree in a related subject. If your undergraduate degree is not in Fine Art or a related discipline but you can provide a strong portfolio of visual work, your application will be considered. An interview is also required.

Programme description:

On this programme you will develop a deeper knowledge of your fine art practice and will experiment and explore to enable a personal practice to develop, as well as professionalising your approach.

You will expand your material intelligence through lectures, seminars, tutorials, critiques, briefs and live projects, field trips and participatory events. You will explore your own potential as a citizen of the world who understands their creative work both in terms of ethics and social justice and you will build on your knowledge of fine art through material thinking and critical theory. Our lecturers and technicians will support your independent work. Your experience in professional and scholarly fields will become integral to your studio practice.

Topics include:

Experiments / Explore / Coexistents.

Career Outcomes:

This course allows you to develop as an artist and refine your creative practice taking you to the next level of your fine art career.

Key Features of this Programme:

- Guest speakers and masterclasses.
- Access to specialist studios and workshop spaces.
- National and international field trips.
- Group exhibitions.
- Networking opportunities.
- Opportunities to engage with staff research.
- Opportunities to present your work at student symposiums.

ILLUSTRATION MFA

Duration: 2 years full time.

UK Entry Requirements:

A minimum of a 2:1 undergraduate degree in a related subject. If your undergraduate degree is not in Fine Art or a related discipline but you can provide a strong portfolio of visual work, your application will be considered. An interview is also required.

Programme description:

Our Illustration MFA enables you to enrich your existing practice and develop as a professional artist in a creative community. You will produce a mature body of work, coexisting with debates at the forefront of your discipline. The course focuses on making, informed by technical knowledge. You will research, develop and refine your ideas. Your practice and your academic understanding will become inseparable.

Topics include:

Experiments / Explore / Coexistents.

Career Outcomes:

This course allows you to develop as an illustrator and refine your creative practice taking you to the next level of your career.

Key Features of this Programme:

- Guest speakers and masterclasses.
- Access to specialist studios and workshop spaces.
- National and international field trips.
- Group exhibitions.
- Networking opportunities.
- Opportunities to engage with staff research.
- Opportunities to present your work at student symposiums.

PHOTOGRAPHY MFA

Duration: 2 years full time.

UK Entry Requirements:

A minimum of a 2:1 undergraduate degree in a related subject. If your undergraduate degree is not in Fine Art or a related discipline but you can provide a strong portfolio of visual work, your application will be considered. An interview is also required.

Programme description:

This course enables you to enrich your existing practice and develop as a professional photographer in a creative community. You will produce a mature body of work, coexisting with debates at the forefront of your discipline. The course focuses on making, informed by technical knowledge. You will research, develop and refine your ideas. Your practice and your academic understanding will become inseparable. You will build on your knowledge of photography through creative thinking and critical theory. Our lecturers and technicians will support your independent work and your experience in professional and scholarly fields will become integral to your studio practice.

Topics include:

Experiments / Explore / Coexistents.

Career Outcomes:

This course allows you to develop as a photographer and refine your creative practice taking you to the next level of your career.

Key Features of this Programme:

- Guest speakers and masterclasses.
- Access to specialist studios and workshop spaces.
- National and international field trips.
- Group exhibitions.
- Networking opportunities.
- Opportunities to engage with staff research.
- Opportunities to present your work at student symposiums.

MSC DIGITAL MARKETING & DATA ANALYTICS

Duration: 1 year full-time, 2 years part-time.

UK Entry Requirements:

An existing minimum 2:2 degree (or equivalent) in a relevant subject area.

Work experience in a relevant setting, within the last two years.

Programme description:

Our Digital Marketing and Data Analytics MSc is a unique programme and is delivered online in partnership with Digital Marketing Agency, Mediaworks. You'll gain insights needed for a career in a digital-first marketing industry. You'll investigate how marketing strategies with a digital focus integrate with traditional techniques. Question how to best use these to attract new customers, build loyalty and provide superior service. Delivery of this course is online only giving you the flexibility to study alongside varying commitments.

Topics include:

Strategic Thinking in Digital Marketing / Driving Insight from Data Analytics / Communicating in the Digital Age / Digital Change, Innovation and Disruption

Career Outcomes:

Graduates will typically find employment in roles such as Analytics Manager, CRM and Email marketing Manager, Digital Agency Account Manager and Sales Director, Copywriter, Digital Marketing Manager and Web Manager, PPC Search Manager or Search Manager / SEO Manager.

Key Features of this Programme:

- Designed and developed in partnership with Mediaworks, who are recognised as one of the leading independent Digital Marketing agencies in the UK.
- 100% online distance learning, flexible programme—balance our studies alongside existing commitments.
- As a certified Google Premier Partner, Mediaworks' commitment to digital has attracted global recognition and a host of industry awards.

ENTREPRENEURSHIP AND INNOVATION MSC

Duration: 1 year full time | 2 years full time with a year in industry | 2 years part time.

UK Entry Requirements:

A minimum of a 2:2 undergraduate degree in a related subject.

Programme description:

Entrepreneurial and innovation skills are increasingly sought after by employers who want their teams to take advantage of new opportunities. You will learn to apply best practice approaches to designing, developing, and running your own innovation-driven business.

The course will explore the process of generating new business ideas, developing and refining ideas, designing the infrastructure, right through to launching the business. You will focus on how innovation can be exploited in technological and business contexts.

Topics include:

New venture creation / Becoming an entrepreneurial practitioner / Data analytics and the blockchain / Digital and interactive marketing / Perspectives on sustainable business

Career Outcomes:

With these skills, you could pursue a number of careers, such as :

- Business development manager
- Business adviser
- Start-up owner

Taking this course would also prepare you to continue your postgraduate study with either an MPhil, or PhD.

Key Features of this Programme:

- Developing an understanding of the skills needed to undertake leadership responsibilities in an ethical and informed way.
- An emphasis on the combination of theory and practical experience.
- Supporting you to develop entrepreneurship and innovation skills and operate effectively and competently in international markets.
- Assessment methods used to mirror organisational based activities.
- Participation in active and supportive forums drawing on practical expertise.
- Opportunities to gain work experience.

MSC PROJECT MANAGEMENT

Duration: 1 year full-time online distance learning, 2 year part-time fast track online distance learning, 3 year part-time structured online distance learning.

UK Entry Requirements:

An existing minimum 2:2 degree (or equivalent) in a relevant subject area.

Work experience in a relevant setting, within the last two years.

Programme description:

This programme has been uniquely designed in partnership with 20/20 - the largest independent provider of project management training courses in the UK. They provide project management training solutions for companies and individuals across the UK. The client list includes British Petroleum, EDF Energy and The Ministry of Defence. This unique partnership of an academic institution and a leading project management, business and leadership training and consulting company offers students the opportunity to study both the in-depth academic content and the innovative and effective project management solutions used by some of the UK's largest companies. You will gain an understanding of the principles and practice of project management. We will give you the tools and techniques to contribute to the delivery of projects. You will also have the opportunity to gain professional certifications such as APFQ; APMO; CAPM; PMP and PRINCE2® Foundation and Practitioner.

Topics include:

Managing Projects and Programmes / Strategic Project Management / Risk and Issue management / Project Leadership and Team Management / Project Commercial Management

Professional Accreditations:

Association for Project Management / Project Management Institute

Career Outcomes:

Graduates will typically find employment in roles such as project manager, business change manager, project coordinator or project officer across many industries such as construction, engineering, IT, marketing and many more.

Key Features of this Programme:

- Flexible approach to enable you to make the best use of your time.
- Online lectures, specially tailored to help you develop your critical thinking and innovative skills.
- Input from experienced managers and professionals.
- Assessment methods used to mirror organisational based activities.
- Provides a supportive platform for critical reflection, through reflecting on the application of academic theories to real work situations.
- Participation in active and supportive forums drawing on practical expertise.

MSC HUMAN RESOURCE MANAGEMENT

Duration: 1 year full-time, 2 years part-time.

UK Entry Requirements:

An existing minimum 2:2 degree (or equivalent) in a relevant subject area.

Work experience in a relevant setting, within the last two years.

Programme description:

This MSc in Human Resource Management combines an in-depth understanding of human resource management (HRM) with a broader exploration of its organisational and management context. The programme explores HR strategy both within organisations and in relation to the external environment. You will be exposed to the latest contemporary research in HRM to develop your critical thinking skills, develop and apply them. The programme is international by design. Many different cultural contexts will provide the setting for discussions. You will learn by working with others and building on your experiences and those of your fellow students. You will explore issues including employee relations and employee engagement, learning and development, employee resourcing and talent management, globalisation and international forces, social and technological change and government policies and regulation.

Topics include:

Perspectives on Sustainable Business / Global Strategic HRM in Context / The Dynamics of Recruitment and Selection / Managing Learning and Development

Professional Accreditations:

Chartered Institute of Professional Development (CIPD).

Career Outcomes:

Graduates typically find employment as HR executives, HR consultants, Learning and Development Managers, Recruiters and HR officers among many other roles across HRM and learning and development.

Key Features of this Programme:

- Supports the skills needed to operate effectively and competently in an international context.
- Uses assessment methods which mirror organisation-based activities.
- Provides a supportive platform for critical reflection, through the application of academic theories to real work situations.

MSC INTERNATIONAL BUSINESS

Duration: 1 year full-time, 2 years part-time.

UK Entry Requirements:

An existing minimum 2:2 degree (or equivalent) in a relevant subject area.

Work experience in a relevant setting, within the last two years.

Programme description:

On this course you will engage with the subjects relevant to global, national and local business. You will engage with latest contemporary research in international business, develop your critical thinking skills and apply them. Projects and assignments are focused on helping you apply the theories, tools and techniques you learn to bolster your skillset prior to graduation. The course brings together relevant contemporary academic theory and research with practical understanding of organisational processes. It will involve you in a demanding process of personal and professional development. You will develop an integrated and critically aware understanding of management in the context of contemporary business and management.

Topics include:

Perspectives on Sustainable Business / Data Analytics and the Blockchain / International Trade and Business / Global Business Issues

Professional Accreditations:

The Chartered Management Institute / The Institute of Export and International Trade

Career Outcomes:

Graduates typically find employment in roles such as Business development manager, Financial trader, Supply chain manager, Management Consultant, product Manager, Business Analyst and many more.

Key Features of this Programme:

- Develops responsible and ethical managers.
- Develops international skills of leadership and management.
- Uses assessment methods which mirror organisation-based activities.
- Provides a supportive platform for critical reflection through the application of academic theories to your real work situations.
- Includes excellent personal and academic support. You will be allocated an academic tutor to support you throughout the programme.

MSC INTERNATIONAL FASHION MARKETING

Duration: 1 year full-time, 2 years part-time.

UK Entry Requirements:

An existing minimum 2:2 degree (or equivalent) in a relevant subject area.

Work experience in a relevant setting, within the last two years.

Programme description:

Jump into the exciting world of international fashion marketing and explore key aspects of the discipline. With the growth of digital advancements and consumer power, the international fashion world is in the market for transparent, ethical and customer-driven strategies. The programme will examine the challenges faced by fashion marketers and how such challenges can be overcome. Responding to the need for specialist graduates with knowledge of both fashion and marketing, this MSc has been developed alongside industry to bring the practical, technical expertise required for students to compete and thrive in this exciting industry.

Topics include:

Global Fashion Consumers / Global Fashion Marketing / Integrated Fashion Communication / Fashion Branding

Career Outcomes:

Graduates typically find employment for organisations in the fashion industry in roles such as Retail buyer, Retail marketing manager, Retail merchandiser, Visual merchandiser, Brand Manager, PR officer and many more.

Key Features of this Programme:

- Develops responsible and ethical fashion marketers who consider more than the bottom line.
- Uses assessment methods which mirror organisation-based activities such as portfolio development and trend forecasting.
- Provides a supportive platform for critical reflection through the application of academic theories to your real work situations in the international fashion industry.
- Includes excellent personal and academic support. You will be allocated an academic tutor to support you throughout the programme.

MSC LEADERSHIP & MANAGEMENT

Duration: 1 year full-time, 2 years part-time.

UK Entry Requirements:

An existing minimum 2:2 degree (or equivalent) in a relevant subject area.

Work experience in a relevant setting, within the last two years.

Programme description:

This course explores the concept of leadership and you will learn about functional topics including corporate social responsibility, coaching and data analytics. You will learn about strategic planning and learn how to lead transformation and change. Engaging with the latest contemporary research in leadership and management, you will develop your critical thinking skills and apply them. The course brings together relevant contemporary academic theory and research with a practical understanding of how organisations operate. Through the development of an understanding of contemporary business and management issues, the programme involves you in a demanding process of personal and professional development.

Topics include:

Data Analytics and the Blockchain / Coaching for Success / Driving Value through Change and Cultural Management / Leadership in Organisations

Professional Accreditations:

The Chartered Institute of Management.

Career Outcomes:

Graduates typically find employment in roles as managers and leaders for organisations of a wide range of size and scope in many different industries across the private, public and charitable sectors as well as working in freelance management consulting roles or developing their own organisation through our innovative Grad2Director or Grad2Freelancer initiatives.

Key Features of this Programme:

- Develops responsible and ethical future leaders who consider more than the bottom line.
- Uses assessment methods which mirror organisational work.
- Provides a supportive platform for critical reflection through the application of academic theories to your real work situations in the international business marketplace.
- Includes excellent personal and academic support. You will be allocated an academic tutor to support you throughout the programme.

MSC MARKETING

Duration: 1 year full-time, 2 years part-time.

UK Entry Requirements:

An existing minimum 2:2 degree (or equivalent) in a relevant subject area.

Work experience in a relevant setting, within the last two years.

Programme description:

Develop your critical understanding and knowledge of marketing, with a focus on strategic marketing, brand management, consumer behaviour, marketing communications and digital marketing. Develop your leadership skills and your individual and organisational potential. This course teaches you key theories, tools and techniques and how to apply them. The Marketing MSc brings together relevant contemporary academic theory and research with a practical understanding of organisational operations. You will develop an integrated and critically aware understanding of management in the context of contemporary business and marketing.

Topics include:

Marketing Communications / Strategic Marketing Planning / The Psychology of Marketing / Digital and Interactive Marketing

Professional Accreditations:

The Chartered Marketing Institute

Career Outcomes:

Graduates typically find employment in roles in digital marketing, marketing, PR and communications for organisations of a wide range of size and scope in many different industries across the private, public and charitable sectors as well as working in freelance marketing, PR and comms consulting roles or developing their own organisation through our innovative Grad2Director or Grad2Freelancer initiatives.

Key Features of this Programme:

- Develops responsible and ethical marketing experts who consider more than the bottom line.
- Uses assessment methods which mirror organisational work such as consultancy work with big brands such as John Lewis.
- Provides a supportive platform for critical reflection through the application of academic theories to your real work situations in the international business marketplace.
- Includes excellent personal and academic support. You will be allocated an academic tutor to support you throughout the programme.

MBA MASTERS OF BUSINESS ADMINISTRATION

Duration: 1 year full-time, 2 years part-time. Available at both York and London.

UK Entry Requirements:

An existing minimum 2:2 degree (or equivalent) in a relevant subject area.

Work experience in a relevant setting, within the last two years.

Programme description:

This course is for managers who want to elevate their career or those who aspire to leadership roles in the future. The York Business School MBA develops your critical understanding of the issues relating to business and management and enhances your ability to maximise individual and organisational potential. The Masters of Business Administration at York Business School allows you to develop an integrated and critically aware understanding of management in the context of contemporary business issues.

Topics include:

Business Development and Value Creation / Marketing and Data Analytics / Accounting and Finance for Decision Making / Leading Innovation and Cultural Change

Specialisations:

MBA with a year in Industry.

Professional Accreditations:

The Chartered Institute of Management.

Career Outcomes:

Graduates typically find employment in roles as managers and leaders for organisations of a wide range of size and scope in many different industries across the private, public and charitable sectors as well as working in freelance management consulting roles or developing their own organisation through our innovative Grad2Director or Grad2Freelancer initiatives.

Key Features of this Programme:

- Develops responsible and ethical managers and leaders who consider more than the bottom line.
- Uses assessment methods which mirror organisational work including consultancy work with big brands such as John Lewis.
- Provides a supportive platform for critical reflection through the application of academic theories to your real work situations in the international business marketplace.
- Includes excellent personal and academic support. You will be allocated an academic tutor to support you throughout the programme.

MBA CONVERSION (online)

Duration: 1 year part-time.

UK Entry Requirements:

An existing minimum 2:2 degree (or equivalent).

A postgraduate degree in a related business and/or management discipline.

Three years work experience, preferably with some experience in a leadership or managerial role.

Programme description:

This unique and innovative online programme enables you to evaluate your recent professional development and gain an MBA online through evaluating your previous work. Designed to meet the needs of busy professionals, this programme is supported by a range of tutorials and workshop sessions and will be facilitated by online learning and a range of either online or face-to-face workshops and tutorials. On this programme, you will be led through a single 60 credit module influenced by your professional development and practice. The module will challenge you to reflect upon your experiences of applying previously taught theory to your practice-based learning and experiences.

Topics include:

Continuous Professional Development through Reflective Practice

Career Outcomes:

Graduates typically find employment in roles as managers and leaders for organisations of a wide range of size and scope in many different industries across the private, public and charitable sectors as well as working in freelance management consulting roles or developing their own organisation through our innovative Grad2Director or Grad2Freelancer initiatives.

Key Features of this Programme:

- Develops a critical, reflective and integrated understanding of self in the context of business and develops your own professional practice as a responsible leader or manager.
- Encourages you to apply key learned concepts to scenarios in order to improve personal and professional practice.
- Develops and enhances your skills of lifelong learning and professional development in order to work as a critically reflexive practitioner.

MSC PROFESSIONAL ACCOUNTING

Duration: 18 months full-time.

UK Entry Requirements:

An existing minimum 2:2 degree (or equivalent) in a relevant subject area.

Work experience in a relevant setting, within the last two years.

Completion of ACCA applied knowledge and applied skills papers.

A pass in the Ethics and Professional Skills module.

Programme description:

The York Business School MSc Professional Accounting course allows you to gain a master's degree whilst at the same time preparing for the final four Strategic Professional examination papers of the Association of Chartered Certified Accountants (ACCA). You'll learn to operate effectively within the global marketplace, enabling you to pursue a career in accounting or to further your knowledge of accounting standards and procedures. This programme covers strategic financial issues that are important for accountants. You will gain an understanding of key issues and applied methodologies relating to management accounting, financial accounting and corporate finance. Alongside your master's qualification, you will be prepared to sit the Association of Chartered Certified Accountants (ACCA) final four Strategic Professional examination papers.

Topics include:

Advanced Performance Management / Global Business Issues / Strategic Business Reporting / Advanced Financial Management.

Professional Accreditations:

Association of Chartered Certified Accountants (ACCA).

Career Outcomes:

Graduates typically find employment in roles such as chartered certified accountant, chartered management accountant or a chartered public finance accountant working for a big accountancy firm, auditor or taxation specialist.

Key Features of this Programme:

- Alongside your master's qualification, you will be prepared to sit the Association of Chartered Certified Accountants (ACCA) final four Strategic Professional examination papers.
- Reflects the aspirations in the development of responsible and ethical leaders.
- Emphasises on the combination of theoretical rigour and practical experience.

YORK ST JOHN UNIVERSITY

Lord Mayor's Walk, York YO31 7EX

T: 01904 624624

E: Intdev@yorks.ac.uk

yorks.ac.uk/international

This programme gives information about York St John University and is intended only for the general guidance of prospective students. It does not form part of any contract. Changing circumstances may oblige York St John University to add, modify or cancel its programmes or services at any time.

Whilst every effort has been made to ensure the accuracy of the information contained in this leaflet, the University cannot accept responsibility for errors. This leaflet is also available in other formats, for example large print or audio tape.

Please contact York St John International Development on +44 (0)1904 876634 or email Intdev@yorks.ac.uk for details.

May 2021



[/YSJUGlobal](https://www.facebook.com/YSJUGlobal)



[@YSJUGlobal](https://twitter.com/YSJUGlobal)



[@YSJU_GLOBAL](https://www.instagram.com/YSJU_GLOBAL)

Est.
1841

**YORK
ST JOHN
UNIVERSITY**